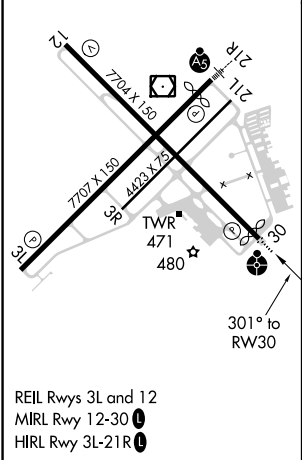
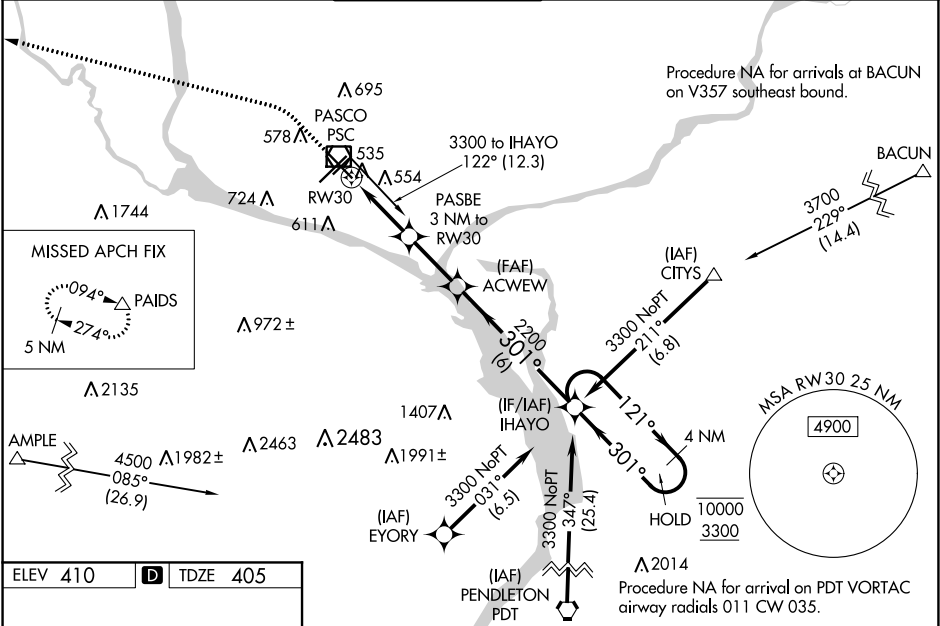


WAAS CH 86605 W30A	APP CRS 301°	Rwy Idg TDZE Apt Elev	7504 405 410
--	------------------------	-----------------------------	---

RNAV (GPS) Y RWY 30
TRI-CITIES (PSC)

RNP APCH. <div>Baro-VNAV and VDP NA when using Hermiston altimeter setting. Rwy 30 helicopter visibility reduction below 3/4 SM NA. For uncompensated Baro-VNAV systems, LNAV/VNAV NA below -14°C or above 54°C. When local altimeter setting not received, use Hermiston altimeter setting; increase all DA 95 feet and all MDA 100 feet. Increase LPV and LNAV/VNAV all Cts visibilities 1/4 mile; increase LNAV and Circling Cts C and D visibility 1/4 mile.</div>	ODALS 	MISSED APPROACH: Climb to 900 then climbing left turn to 5200 direct PAIDS and hold, continue climb-in-hold to 5200.
---	-----------	---

ATIS 125.65	CHINOOK APP CON* 128.75 377.2	TRI-CITIES TOWER* 135.3 (CTAF) 0 323.3	GND CON 121.8	CLNC DEL 120.0	UNICOM 122.95
-----------------------	---	--	-------------------------	--------------------------	-------------------------



ELEV 410	D	TDZE 405
900	5200	PAIDS
*LNAV only	PASBE 3 NM to RW30	ACWEW
*1.2 NM to RW30	2200	IHAYO
RW30	1400*	301°
1.2 NM	1.8 NM	2.5 NM
6 NM	4 NM	4 NM
CATEGORY	A	B
LPV DA	655-3/4	250 (300-3/4)
LNAV/VNAV DA	749-1	344 (400-1)
LNAV MDA	840-3/4	435 (500-3/4)
CIRCLING	880-1	940-1
470 (500-1)	530 (600-1)	1040-1 3/4
		630 (700-1 3/4)
		1100-2 1/4
		690 (700-2 1/4)