
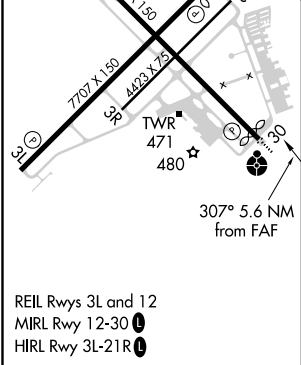
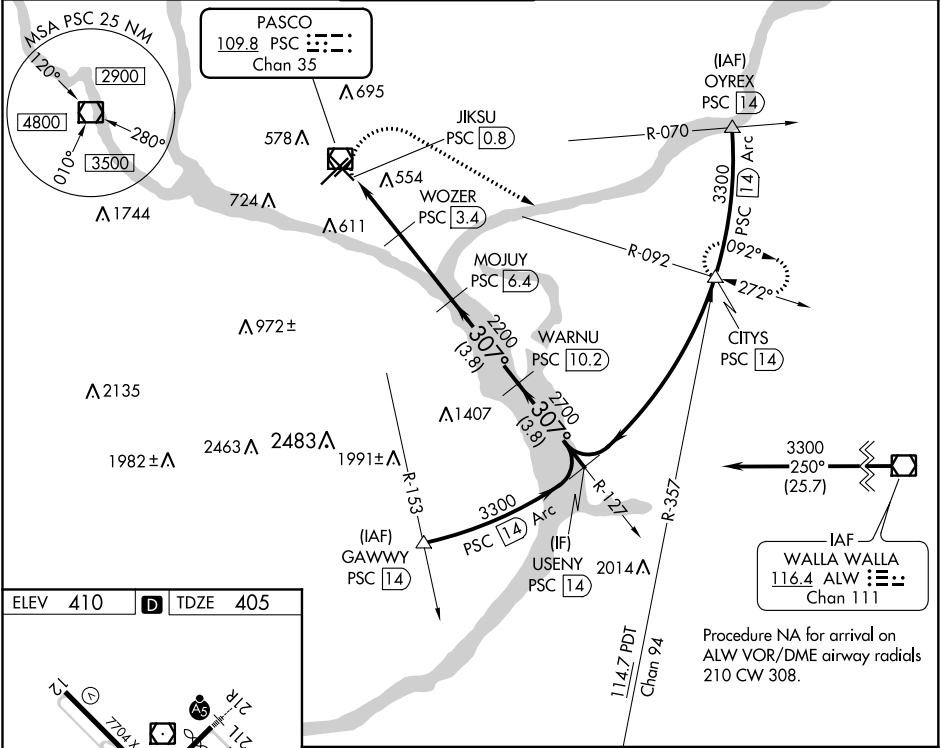


VOR/DME PSC	APP CRS	Rwy Idg	7504
109.8	307°	TDZE	405
Chan 35		Apt Elev	410

VOR RWY 30
TRI-CITIES(PSC)

DME required.			ODALS 	MISSED APPROACH: Climbing right turn to 3200 on heading 105° and PSC R-092 to CITYS/PSC 14 DME and hold.		
▼ Rwy 30 helicopter visibility reduction below ¼ SM not authorized. VDP NA when using Hermiston altimeter setting. When local altimeter setting not received, use Hermiston altimeter setting and increase all MDA 100 feet, increase S-30 visibility Cat C/D ¾ SM and Circling Cat C/D visibility ¼ SM. For inoperative ALS, increase S-30 Cat C/D visibility to 1½ SM.						
ATIS 125.65	CHINOOK APP CON ★ 128.75 377.2	TRI-CITIES TOWER ★ 135.3 (CTAF) 0 323.3	GND CON 121.8	CLNC DEL 120.0	UNICOM 122.95	



3200		CITYS		WARNU		USENY	
hdg 105°		PSC R-092		PSC 10.2		PSC 14	
JKSU		WOZER		MOJUJ		PSC 14	
PSC 0.8		PSC 3.4		PSC 6.4		PSC 10.2	
1.1 NM		1.5 NM		3 NM		3.8 NM	
CATEGORY		A		B		C	
S-30		820-¾		415 (500-¾)		820-1	
CIRCLING		880-1		940-1		1040-1 ¾	
		470 (500-1)		530 (600-1)		630 (700-1¾)	
						1100-2 ¼	
						690 (700-2¼)	

NW-1, 03 DEC 2020 to 31 DEC 2020

NW-1, 03 DEC 2020 to 31 DEC 2020