
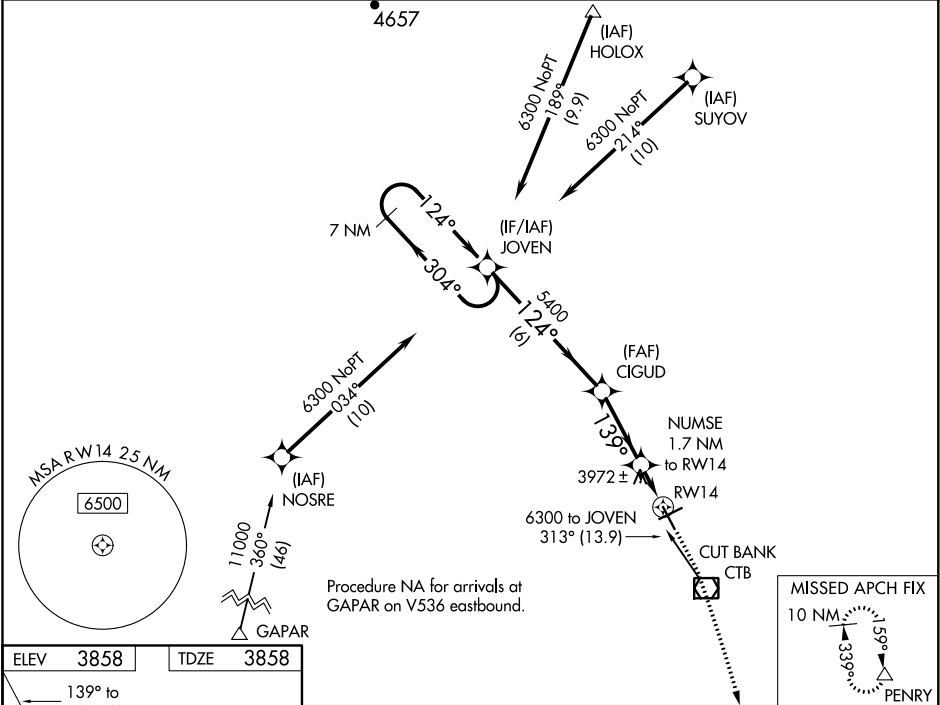


WAAS CH 93537 W14A	APP CRS 139°	Rwy Idg TDZE 3858 Apt Elev 3858
--	------------------------	---

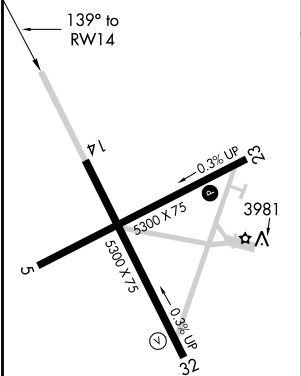
RNAV (GPS) RWY 14
CUT BANK INTL (CTB)

 For uncompensated Baro-VNAV systems, LNAV/VNAV NA below -25°C (-13°F) or above 51°C (124°F). DME/DME RNP-0.3 NA.	MISSED APPROACH: Climb to 4400 then climbing right turn to 9000 direct PENRY and hold.
--	--

ASOS 119.025	SALT LAKE CITY CENTER 133.4 285.4	UNICOM 123.0 (CTAF) 0
------------------------	---	---------------------------------



ELEV 3858	TDZE 3858
------------------	------------------



REIL Rwy 32 0
MIRL Rwy 5-23 and 14-32 0

7 NM Holding Pattern				
JOVEN				
6300 ← 304° → 124° → 5400				
GP 3.00° TCH 52				
CIGUD				
5400				
NUMSE 1.7 NM to RWY 14				
*1 NM to RWY 14				
*4440				
RWY 14				
6 NM 3 NM 0.7 1 NM				
CATEGORY	A	B	C	D
LPV DA	4058-1		200 (200-1)	
LNAV/VNAV DA	4108-1		250 (300-1)	
LNAV MDA	4240-1	382 (400-1)	4240-1 1/8	382 (400-1 1/8)
CIRCLING	4280-1 422 (500-1)	4320-1 462 (500-1)	4400-1 1/2 542 (600-1 1/2)	4620-2 1/2 762 (800-2 1/2)

NW-1, 03 DEC 2020 to 31 DEC 2020

NW-1, 03 DEC 2020 to 31 DEC 2020