

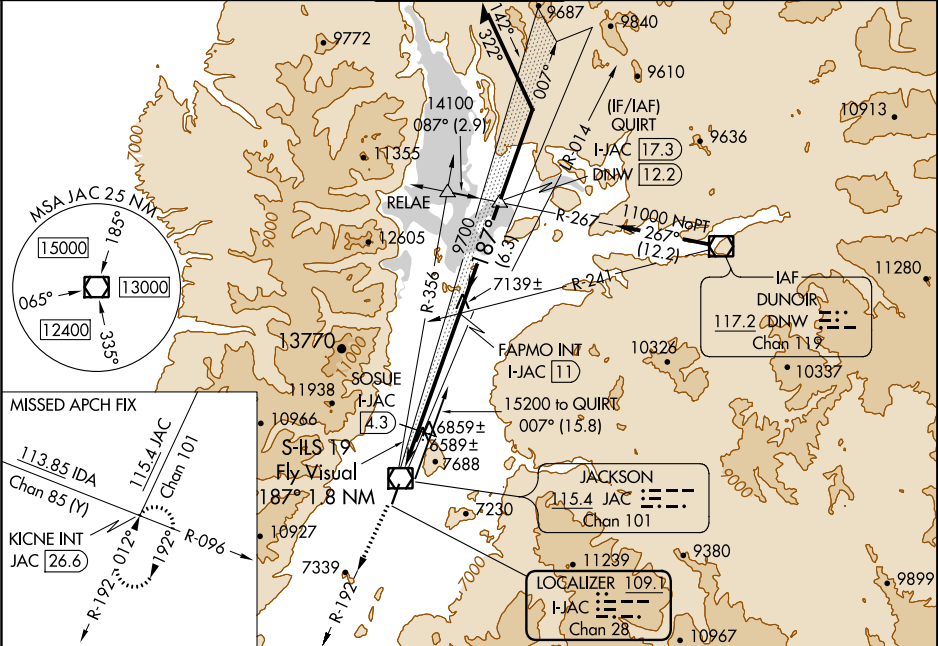
LOC/DME I-JAC	APP CRS	Rwy Idg	6300
109.1	187°	TDZE	6451
Chan 28		Apt Elev	6451

ILS Y or LOC RWY 19

JACKSON HOLE (JAC)

<div><div>NA</div><div>-21°C</div></div>	Inoperative table does not apply. Circling NA E of Rwy 1-19.	<div>MALS</div> <div><div><div></div></div></div>	MISSED APPROACH: Climb to 14000 on JAC VOR/DME R-192 to KICNE INT/JAC VOR/DME 26.6 DME and hold, continue climb-in-hold to 14000.
--	---	---	---

ATIS ★ 120.625	SALT LAKE CENTER 133.25 285.6	JACKSON TOWER ★ 118.075 (CTAF) 0	GND CON 124.55	UNICOM 122.95
-------------------	----------------------------------	-------------------------------------	-------------------	------------------



ELEV 6451	D	TDZE 6451
187° 9.8 NM from FAF	6477 A	6466 ± A
TWR 6506	6300 X 50	0.63 UP
HIRL Rwy 1-19	FAF to MAP 9.8 NM	
Knots	60	90
Min:Sec	9:48	6:32
	120	4:54
	150	3:55
	180	3:16

14000	KICNE INT	*LOC only	QUIRT I-JAC 17.3	Remain within 10 NM
S-ILS 19 Fly Visual 187° 1.8 NM	SOSUE I-JAC 4.3	FAPMO INT I-JAC 11	14100	007°
I-JAC 1.2	*I-JAC 3.7	9700	11000	187°
2.5 NM	0.6	6.7 NM	6.3 NM	13100
*7500	9700	9700	11000	GS 3.00° TCH 50
Use I-JAC DME when on the localizer course.				
CATEGORY	A	B	C	D
S-ILS 19	7500-1¼	7500-1½	7500-3	1049 (1100-3)
S-LOC 19	1049 (1100-1¼)	1049 (1100-1½)	7500-3	1049 (1100-3)
CIRCLING	7500-1¼	7500-1½	7500-3	1049 (1100-3)
	1049 (1100-1¼)	1049 (1100-1½)		
SOSUE FIX MINIMUMS (DME REQUIRED)				
S-LOC 19	7300-1	7300-1¼	7300-2½	7300-2¾
	849 (900-1)	849 (900-1¼)	849 (900-2½)	849 (900-2¾)
CIRCLING	7300-1	7300-1¼	7300-2½	7300-2¾
	849 (900-1)	849 (900-1¼)	849 (900-2½)	849 (900-2¾)