

APP CRS
187°

Rwy Idg
6300

TDZE
6451

Apt Elev
6451

RNAV (RNP) Y RWY 19

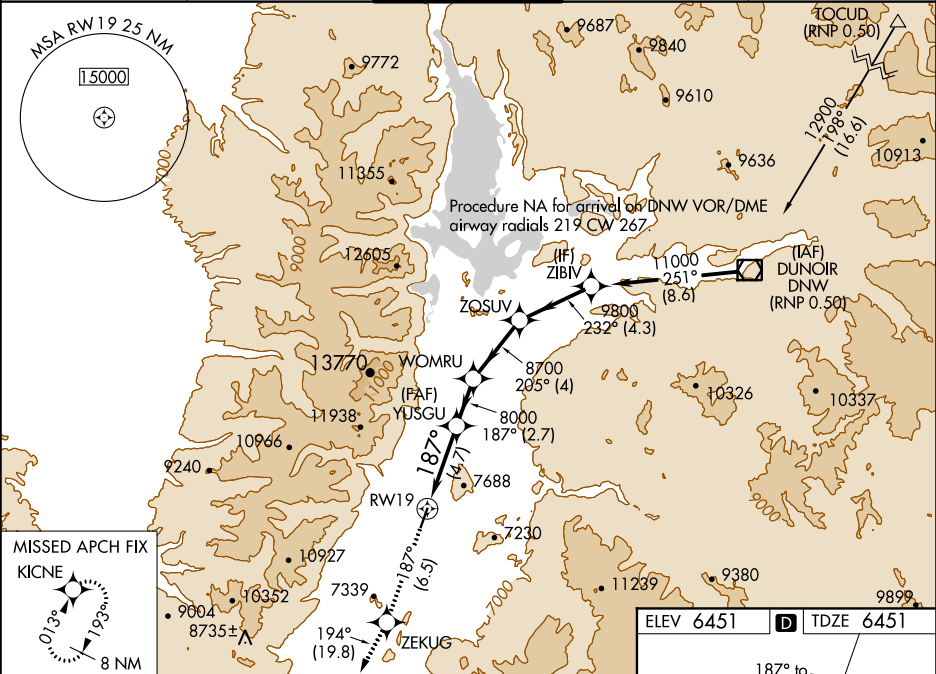
JACKSON HOLE (JAC)

RNP AR APCH:
▼
-21°C
For uncompensated Baro-VNAV systems, procedure NA below -27°C or above 54°C. For inop ALS, increase RNP 0.30 all Cats visibility to 1 $\frac{3}{4}$ SM. For inop ALS, increase RNP 0.11* all Cats visibility to RVR 4500.

MALS
42

MISSED APPROACH: Climb to 14000 on track 187° to ZEKUG and on track 194° to KICNE and hold, continue climb-in-hold to 14000.
* Missed approach requires minimum climb of 250 feet per NM to 8200.
Missed approach requires minimum climb of 330 feet per NM to 8200.

| | | | | |
|-------------------------|---|---|--------------------------|-------------------------|
| ATIS★ 120.625 | SALT LAKE CENTER 133.25 285.6 | JACKSON TOWER★ 118.075 (CTAF) 0 | GND CON 124.55 | UNICOM 122.95 |
|-------------------------|---|---|--------------------------|-------------------------|



14000

ZEKUG

KICNE

tr 187°

tr 194°

WOMRU

ZOSUV

ZIBIV

YUSGU

8000

205°

232°

11000

RW19

8000

187°

8700

9800

GP 3.00°

TCH 50

4.7 NM

2.7 NM

4 NM

4.3 NM

| CATEGORY | A | B | C | D |
|---------------|---|---------|---------------------------|---|
| RNP 0.11 DA * | | 6750/40 | 299 (300- $\frac{3}{4}$) | |
| RNP 0.30 DA # | | 6826/40 | 375 (400- $\frac{3}{4}$) | |
| RNP 0.30 DA | | 6911/55 | 460 (500-1) | |

AUTHORIZATION REQUIRED

ELEV 6451

D

TDZE 6451

187° to RW19

61

6477

TWR 6506

4300 X 150

0.6% Up

6466

HIRL Rwy 1-19 0