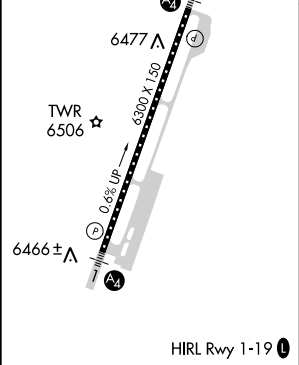
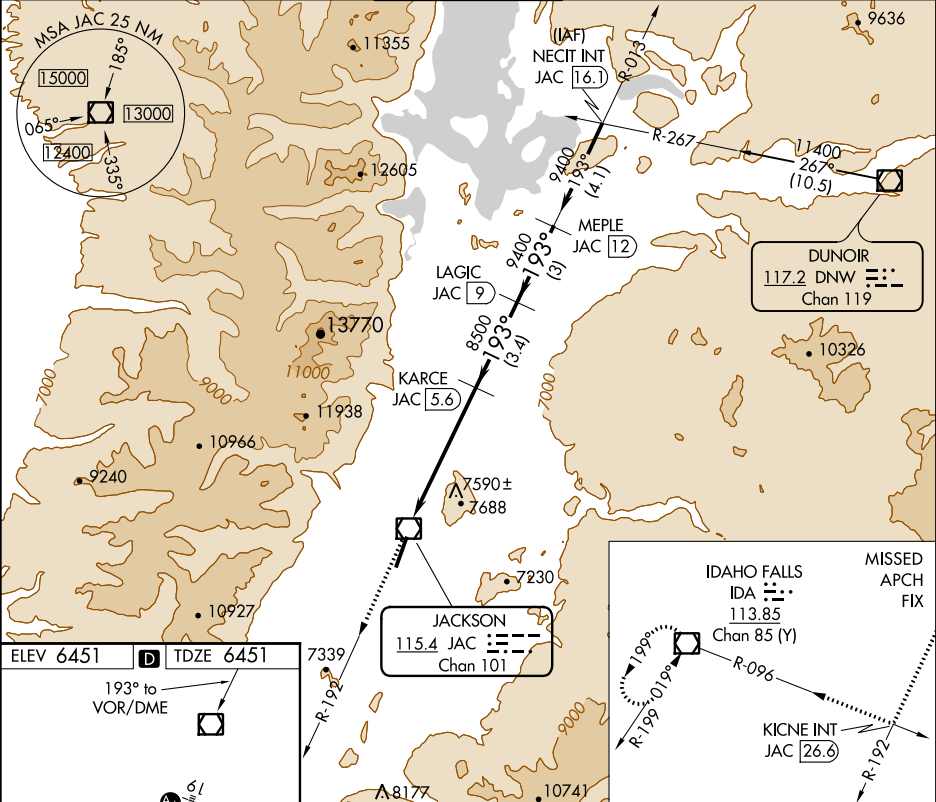


VOR/DME JAC	APP CRS	Rwy Idg	6300
115.4	193°	TDZE	6451
Chan 101		Apt Elev	6451

VOR/DME RWY 19
JACKSON HOLE (JAC)

<p>V A 3 -21°C</p>	<p>Circling NA east of Rwy 1-19. Inop table does not apply. If local altimeter setting not received, procedure NA.</p>	<p>MALS A₂</p>	<p>MISSED APPROACH: Climb to 14000 via JAC R-192 to KICNE INT/JAC 26.6 DME, and right turn via IDA R-096 to IDA VOR/DME and hold.</p>
---	--	---	--

<p>ATIS* 120.625</p>	<p>SALT LAKE CENTER 133.25 285.6</p>	<p>JACKSON TOWER* 118.075 (CTAF) 0</p>	<p>GND CON 124.55</p>	<p>UNICOM 122.95</p>
--	--	---	---	--



<p>14000 ↑ JAC R-192</p>	<p>KICNE INT ↑ IDA R-096</p>	<p>IDA □</p>	<p>VGSI and descent angles not coincident (VGSI Angle 3.00/TCH 53).</p>	<p>MEPLC JAC [12]</p>
<p>JAC R-192</p>	<p>JAC [3.9]</p>	<p>KARCE JAC [5.6]</p>	<p>LAGIC JAC [9]</p>	<p>MEPLC JAC [12]</p>
<p>JAC VOR/DME</p>	<p>3.19° TCH 38</p>	<p>8500</p>	<p>9400</p>	<p>9400</p>
<p>0.3</p>	<p>3.9 NM</p>	<p>1.7 NM</p>	<p>3.4 NM</p>	<p>3 NM</p>
<p>CATEGORY</p>	<p>A</p>	<p>B</p>	<p>C</p>	<p>D</p>
<p>S-19</p>	<p>7840-1¼ 1389 (1400-1¼)</p>	<p>7840-1½ 1389 (1400-1½)</p>	<p>7840-3</p>	<p>1389 (1400-3)</p>
<p>CIRCLING</p>	<p>7840-1¼ 1389 (1400-1¼)</p>	<p>7840-1½ 1389 (1400-1½)</p>	<p>7840-3</p>	<p>1389 (1400-3)</p>

NW-1, 03 DEC 2020 to 31 DEC 2020

NW-1, 03 DEC 2020 to 31 DEC 2020