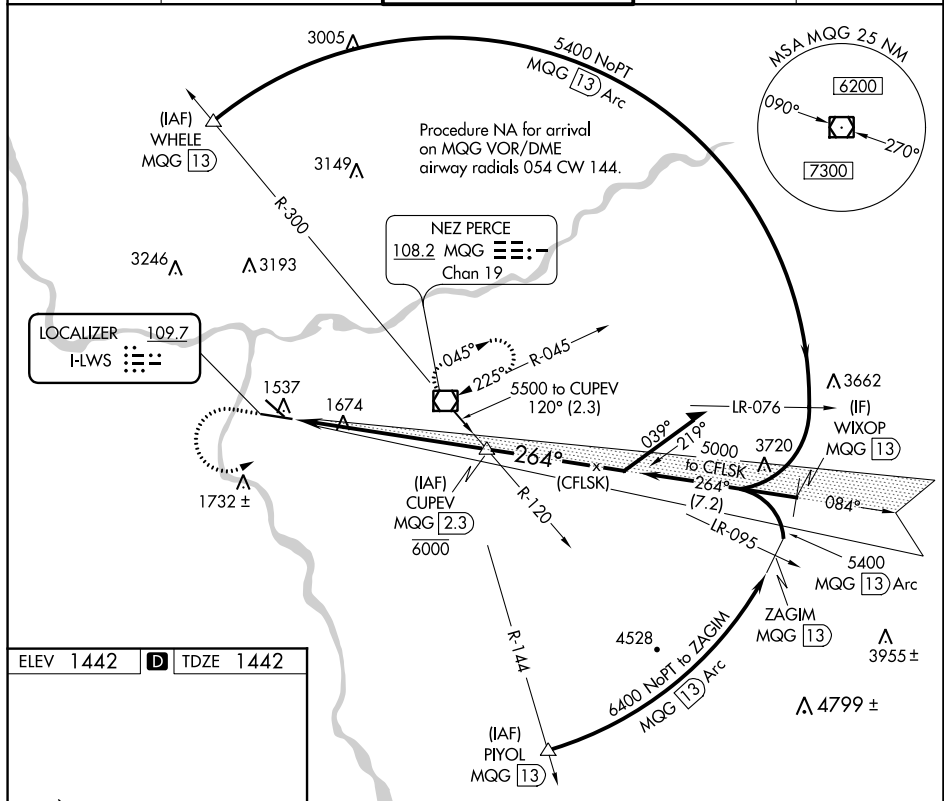


20310

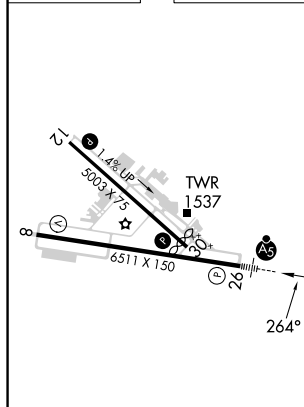
LEWISTON-NEZ PERCE COUNTY (LWS)

MISSED APPROACH: Climb to 3000 then climbing left turn to 5300 direct MQG VOR/DME and hold, continue climb-in-hold to 5300.

ASOS 135.575	SEATTLE CENTER 123.95 290.55	LEWISTON TOWER ★ 119.4 (CTAF) 0 318.8	GND CON 121.9	UNICOM 122.95
-----------------	---------------------------------	--	------------------	------------------



ELEV 1442	D	TDZE 1442
-----------	----------	-----------



REIL Rwy 8 **L**
REIL RWY 12
HIRL Rwy 8-26
MIRL Rwy 12-30

[illegible]

ILS RWY 26

NW-1, 03 DEC 2020 to 31 DEC 2020