

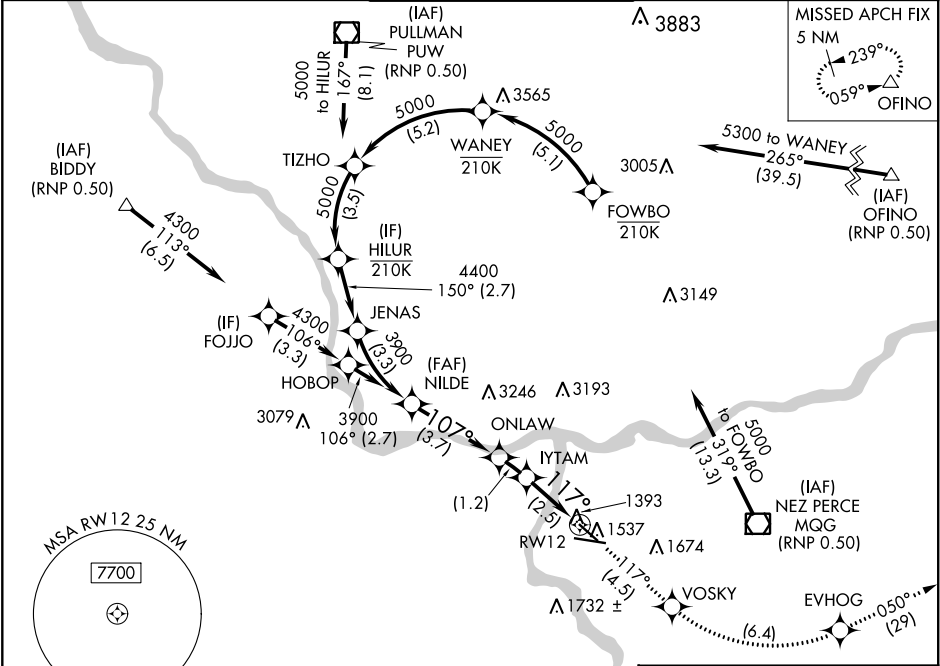
APP CRS	Rwy Idg	4750
117°	TDZE	1415
	Apt Elev	1442

RNAV (RNP) Z RWY 12
LEWISTON-NEZ PERCE COUNTY (LWS)

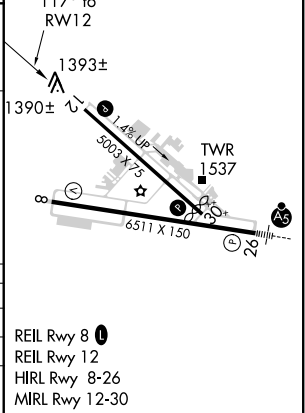
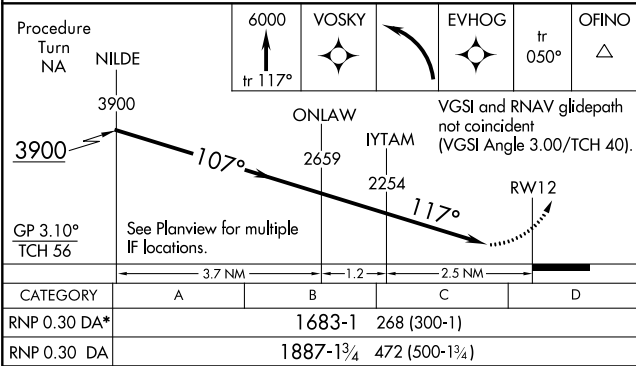
GPS and RF Required. For uncompensated Baro-VNAV systems, procedure NA below -16°C (3°F) or above 36°C (98°F). Procedure NA at night.
* Missed approach requires minimum climb of 260 feet per NM to 3400.

MISSED APPROACH: Climb to 6000 via track 117° to VOSKY and via left turn to EVHOG and via track 050° to OFINO and hold.

ASOS 135.575	SEATTLE CENTER 123.95 290.55	LEWISTON TOWER ★ 119.4 (CTAF) 0 318.8	GND CON 121.9	UNICOM 122.95
-----------------	---------------------------------	--	------------------	------------------



ELEV 1442	TDZE 1415
-----------	-----------



CATEGORY	A	B	C	D
RNP 0.30 DA*	1683-1	268 (300-1)		
RNP 0.30 DA	1887-1 3/4	472 (500-1 3/4)		

AUTHORIZATION REQUIRED