

WAAS CH <b>78012</b> <b>W26A</b>	APP CRS <b>264°</b>	Rwy Idg TDZE Apt Elev	<b>6511</b> <b>1442</b> <b>1442</b>
--	------------------------	-----------------------------	---

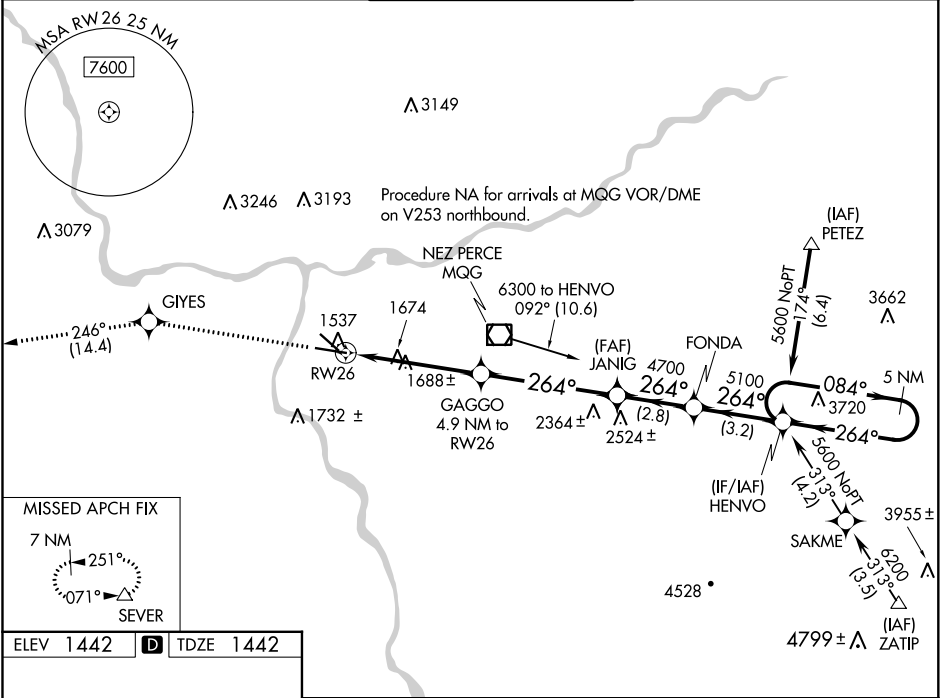
**RNAV (GPS) Y RWY 26**  
LEWISTON-NEZ PERCE COUNTY (LWS)

**⚠** For uncompensated Baro-VNAV systems, LNAV/VNAV NA below -17°C (2°F) or above 47°C (116°F). DME/DME RNP-0.3 NA.

**MALSR**

**MISSED APPROACH:** Climb to 7000 direct GIYES and on track 246° to SEVER and hold, continue climb-in-hold to 7000.

ASOS <b>135.575</b>	SEATTLE CENTER <b>123.95 290.55</b>	LEWISTON TOWER ★ <b>119.4 (CTAF) 0 318.8</b>	GND CON <b>121.9</b>	UNICOM <b>122.95</b>
------------------------	--	---	-------------------------	-------------------------



REIL Rwy 8 1  
REIL Rwy 12  
HIRL Rwy 8-26  
MIRL Rwy 12-30

7000 GIYES tr 246° SEVER

VGSI and RNAV glidepath not coincident (VGSI Angle 3.00/TCH 51).

5 NM Holding Pattern

\*LNAV only

GAGGO 4.9 NM to RW26

JANIG 4700

FONDA 5100

HENVO 5600

GP 3.00° TCH 51

1.4 3.5 4.9 2.8 3.2 NM

CATEGORY	A	B	C	D
LPV DA	1642-1/2 200 (200-1/2)			
LNAV/VNAV DA	1962-1 1/4 520 (600-1 1/4)			
LNAV MDA	1940-1/2 498 (500-1/2)		1940-1 498 (500-1)	
CIRCLING	2000-1 558 (600-1)		2000-1 1/2 558 (600-1 1/2) 2160-2 1/4 718 (800-2 1/4)	

NW-1, 03 DEC 2020 to 31 DEC 2020

NW-1, 03 DEC 2020 to 31 DEC 2020