

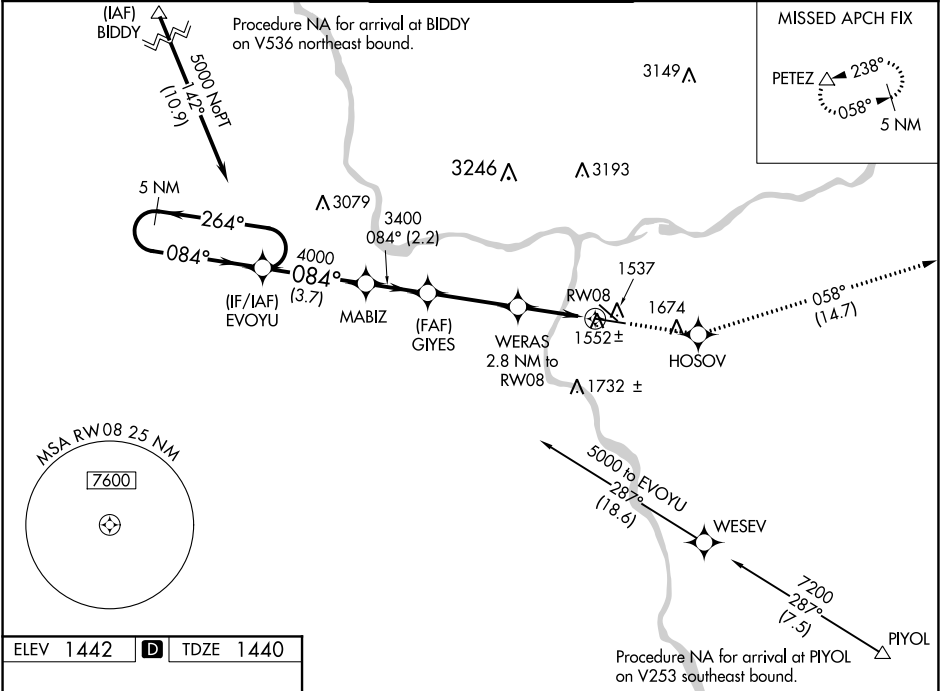
WAAS CH 97600 W08A	APP CRS 084°	Rwy Idg TDZE 1440 Apt Elev 1442
--	------------------------	---

RNAV (GPS) Y RWY 8
LEWISTON-NEZ PERCE COUNTY (LWS)

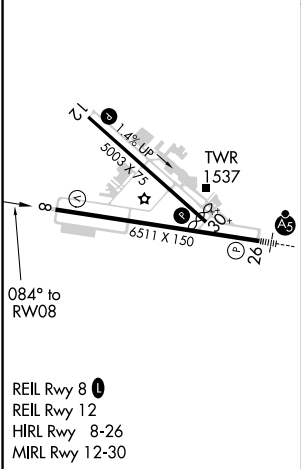
⚠ For uncompensated Baro-VNAV systems, LNAV/VNAV NA below -14°C (7°F) or above 34°C (93°F). DME/DME RNP-0.3 NA.

MISSED APPROACH: Climb to 5700 direct HOSOV and on track 058° to PETEZ and hold, continue climb-in-hold to 5700.

ASOS 135.575	SEATTLE CENTER 123.95 290.55	LEWISTON TOWER ★ 119.4 (CTAF) 0 318.8	GND CON 121.9	UNICOM 122.95
------------------------	--	---	-------------------------	-------------------------



ELEV 1442	D	TDZE 1440
------------------	----------	------------------



5 NM Holding Pattern		EVOYU	MABIZ	GIYES	5700 ↑	HOSOV ✦	tr 058°	PETEZ △
5000 ← 264° 084° →		084°	4000	3400	WERAS 2.8 NM to RW08		*LNAV only	
GP 3.00° TCH 45°			3400	*2360	*1.1 NM to RW08		RW08	
		3.7 NM	2.2 NM	3.3 NM	1.7 NM	1.1 NM		
CATEGORY	A	B	C	D				
LPV DA	1690-¾ 250 (300-¾)							
LNAV/VNAV DA	1736-1 296 (300-1)							
LNAV MDA	1820-1	380 (400-1)	1820-1½		380 (400-1½)			
CIRCLING	2000-1	558 (600-1)	2000-1½ 558 (600-1½)		2160-2¼ 718 (800-2¼)			

NW-1, 03 DEC 2020 to 31 DEC 2020

NW-1, 03 DEC 2020 to 31 DEC 2020