
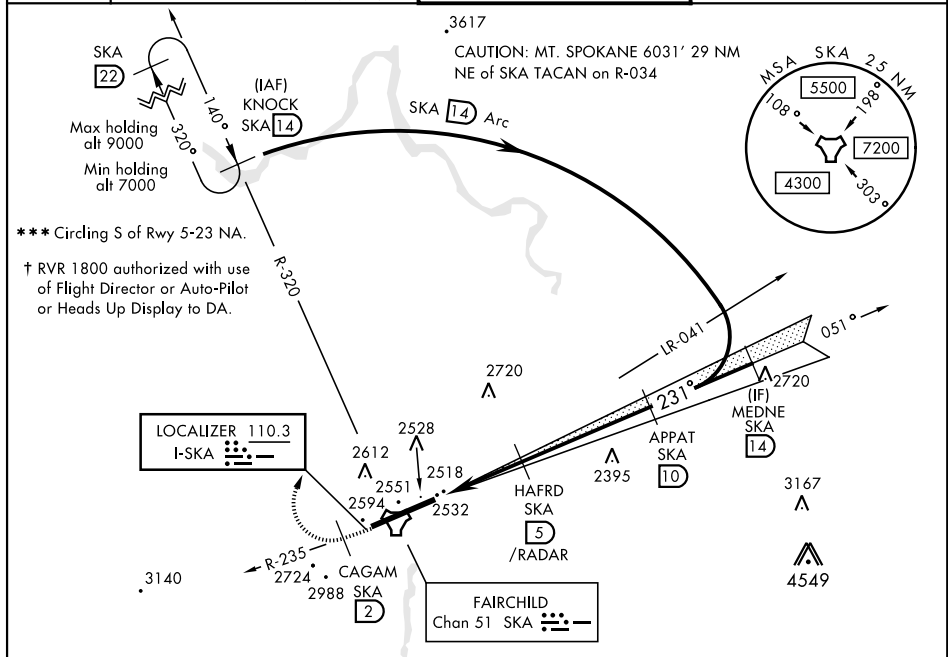


SPOKANE, WASHINGTON

## ILS or LOC RWY 23

LOC I-SKA <b><u>110.3</u></b>	APCH CRS <b>231°</b>	Rwy ldg <b>13,899</b> TDZE <b>2423</b> Arpt Elev <b>2462</b>	AL-553 [USAF]	FAIRCHILD AFB (KSKA)
<p><b>▼</b> * When ALS inop, increase RVR to 40 and vis to <math>\frac{3}{4}</math> mile.</p> <p><b>**</b> When ALS inop, increase CAT ABCDE RVR to 55 and vis to 1 mile.</p>			<p><b>ALSF-1</b></p> 	<p><b>MISSED APPROACH:</b> Climb to 7000 via SKA R-235. At SKA 2 DME, turn right heading 340° to intercept SKA R-320 to KNOCK and hold, continue climb in hold to 7000.</p>

ATIS	SPOKANE APP CON		FAIRCHILD TOWER		GND CON	
257.625	029° - 207°	133.35 263.0				
	208° - 028°	123.75 282.25	120.35	233.7		123.6 275.8



## RADAR or DME REQUIRED

EMERG SAFE ALT 100 NM 10,900

[illegible]

SPOKANE, WASHINGTON

47°37'N-117°39'W

FAIRCHILD AFB (KSKA)

Amdt 3 24MAY18

## ILS or LOC RWY 23

NW-1, 03 DEC 2020 to 31 DEC 2020

NW-1, 03 DEC 2020 to 31 DEC 2020