

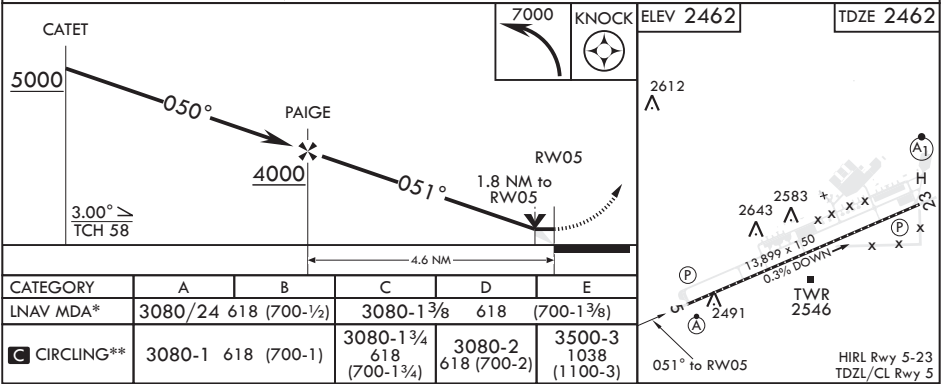
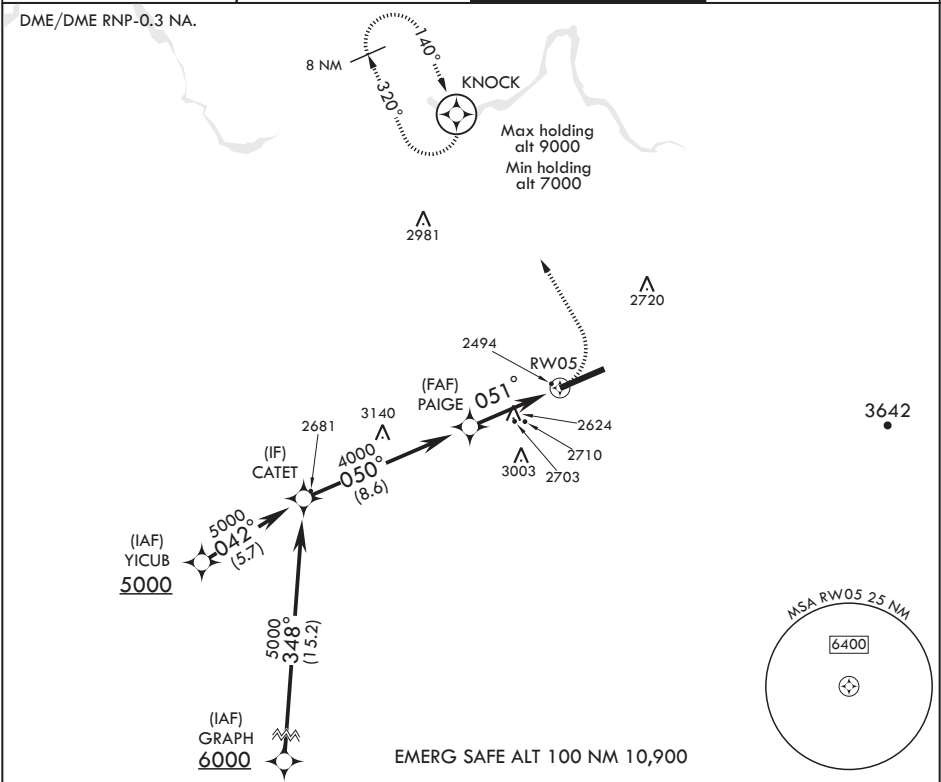
| | | |
|----------|-----------|--------|
| APCH CRS | Rwy Idg | 13,899 |
| 051° | TDZE | 2462 |
| | Arpt Elev | 2462 |

AL-553 (USAF)

FAIRCHILD AFB (KSKA)

| | | |
|--|---|--|
| <p>▼ * When ALS inop, increase CAT A RVR to 55, vis to 1 mile, CAT B RVR to 60, vis to 1 1/4 miles, and CAT CDE vis to 2 1/2 miles. ** Circling not authorized S of Rwy 5-23.</p> | <p>ALSF-2</p>  | <p>MISSED APPROACH: Climb to 7000 via left turn direct KNOCK and hold, continue climb in hold to 7000.</p> |
|--|---|--|

| | | | |
|-----------------|--|-----------------------|------------------------|
| ATIS 257.625 | SPOKANE APP CON 123.75 282.25 208°-028° 133.35 263.0 029°-207° | TOWER 120.35 233.7 | GND CON 123.6 275.8 |
|-----------------|--|-----------------------|------------------------|



NW-1, 03 DEC 2020 to 31 DEC 2020

NW-1, 03 DEC 2020 to 31 DEC 2020