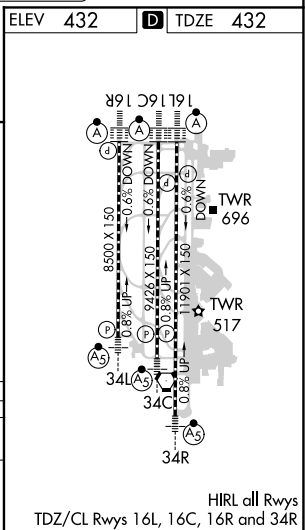
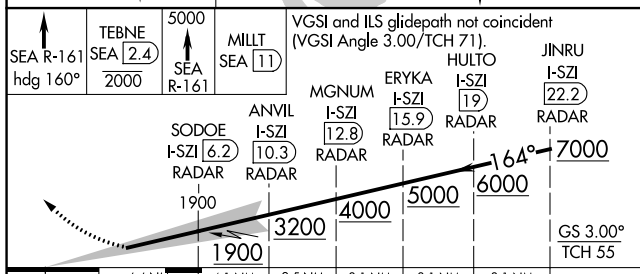
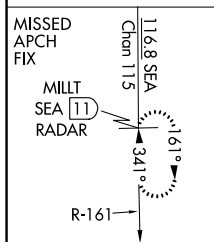
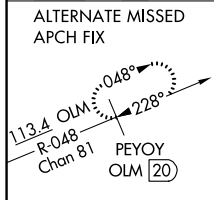


ILS RWY 16C (SA CAT I)
SEATTLE-TACOMA INTL (SEA)

MISSED APPROACH: Climb on heading 160° and SEA VORTAC R-161 to cross TEBNE/SEA 2.4 DME/RADAR at or below 2000, then climb to 5000 on SEA VORTAC R-161 to MILIT/SEA 11 DME/RADAR and hold, continue climb-in-hold to 5000.




D-ATIS
118.0



	4.4 NM	4.1 NM	2.5 NM	3.1 NM	3.1 NM	3.1 NM	
CATEGORY	A	B	C	D			
S-ILS 16C	RA 292/14 150 DA 580						
SA CATEGORY I ILS - SPECIAL AIRCREW & AIRCRAFT CERTIFICATION REQUIRED							

NW-1, 03 DEC 2020 to 31 DEC 2020