

LOC/DME I-SZ	APP CRS	16C	16L
<u>111.7</u>	164°	Rwy Idg 9426	11901
Chan 54		TDZE 430	432
		Apt Elev 432	432

ILS or LOC RWY 16C
SEATTLE-TACOMA INTL (SEA)

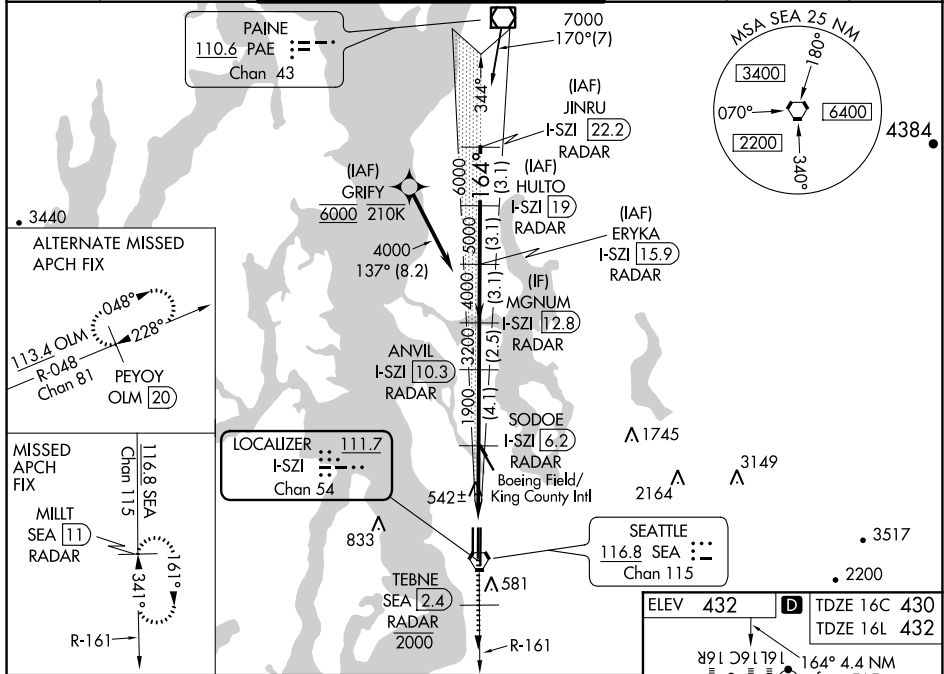
DME or RADAR required. From GRIFY:RNAV 1-GPS required.

T Inop table does not apply to Sidstep 16L Cats A/B. Simultaneous approach authorized with Rwy 16R. Simultaneous operations require use of vertical guidance, maintain last assigned altitude until established on glideslope. For inop ALS, increase S-LOC 16C Cat C, D visibility to RVR 5500. See additional requirements on adjacent information page.

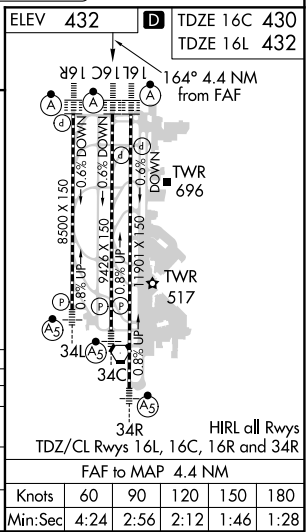
ALSF-2
Rwy 16C/L

MISSED APPROACH: Climb on heading 160° and SEA VORTAC R-161 to cross TEBNE/SEA 2.4 DME/RADAR at or below 2000, then climb to 5000 on SEA VORTAC R-161 to MILLT/SEA 11 DME/RADAR and hold, continue climb-in-hold to 5000.

D-ATIS 118.0	SEATTLE APP CON 133.65 273.45	SEATTLE TOWER 119.9 239.3 (Rwys 16L, 16C, 34C, 34R) 120.95 239.3 (Rwys 16R, 34L)	GND CON 121.7	CLNC DEL 128.0	CPDLC
-----------------	----------------------------------	--	------------------	-------------------	-------



				VGS1 and ILS glidepath not coincident (VGS1 Angle 3.00/TCH 71).				JINRU I-SZI 22.2 RADAR	
*LOC only		SODOE I-SZI 6.2 RADAR		ANVIL I-SZI 10.3 RADAR		MGNUM I-SZI 12.8 RADAR		ERYKA I-SZI 15.9 RADAR	
I-SZI 1.7 RADAR		I-SZI 2.7 RADAR		I-SZI 19 RADAR		I-SZI 19 RADAR		I-SZI 22.2 RADAR	
		1900		3200		4000		5000	
0.9		3.5 NM		4.1 NM		2.5 NM		3.1 NM	
CATEGORY S-ILS 16C		A		B		C		D	
S-LOC 16C		800/24		370 (400-½)		800/35		370 (400-¾)	
SIDESTEP 16L		800/55		368 (400-1)		800-1½ 368 (400-1½)		1000-2 568 (600-2)	
CIRCLING		1000-1		568 (600-1)		1000-1½ 568 (600-1½)		1000-2 568 (600-2)	



NW-1, 03 DEC 2020 to 31 DEC 2020