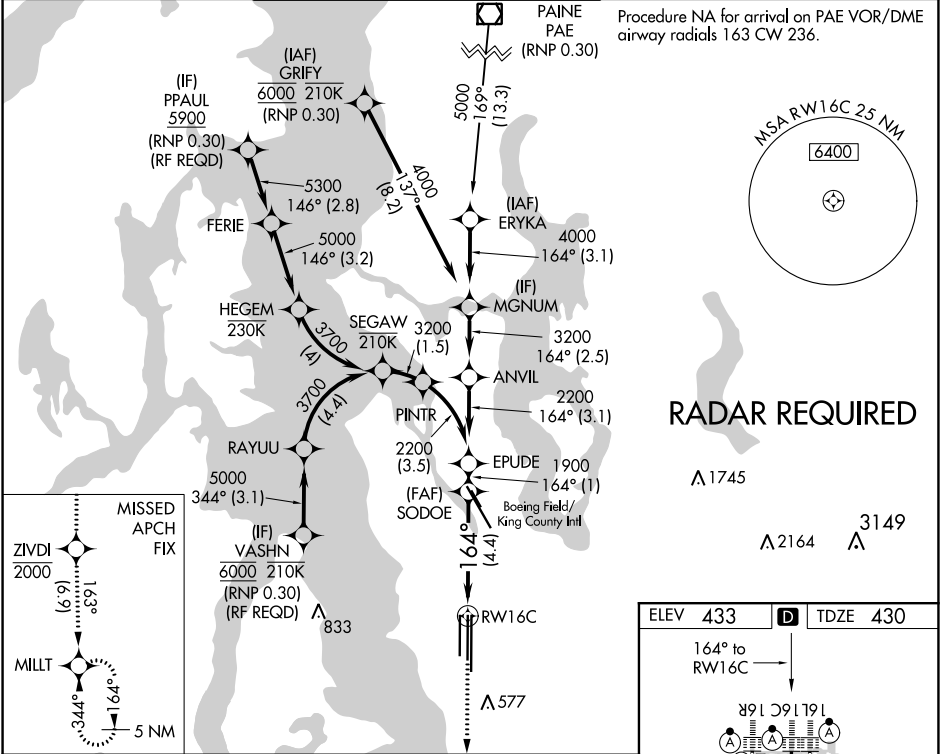


APP CRS	Rwy Idg	9426
164°	TDZE	430
	Apt Elev	433

RNAV (RNP) Z RWY 16C

SEATTLE-TACOMA INTL (SEA)

<p>For uncompensated Baro-VNAV systems, procedure NA below -6°C (22°F) or above 54°C (130°F). GPS required. See additional requirements on adjacent information page. For inop ALS, increase RNP 0.12 all Cats visibility to RVR 5200, and increase RNP 0.30 all Cats visibility to 1 3/8 SM.</p>			MISSED APPROACH: Climb direct ZIVDI to cross ZIVDI at or below 2000, then climb to 5000 on track 163° to MILLT and hold, continue climb-in-hold to 5000.	
D-ATIS	SEATTLE APP CON	SEATTLE TOWER	GND CON	CLNC DEL
118.0	133.65 273.45	119.9 239.3 (Rwys 16L, 16C, 34C, 34R) 120.95 239.3 (Rwys 16R, 34L)	121.7	128.0
				CPDLC



ZIVDI 2000		5000	MILLT	VGSI and RNAV glidepath not coincident (VGSI Angle 3.00/TCH 71).	
163°		tr 163°		EPUDE	
See Planview for multiple IF locations.				SODOE	
RWY 16C				1900 164° 2200	
				GP 3.00° TCH 57	
4.4 NM				1 NM	
CATEGORY	A	B	C	D	
RNP 0.12 DA		758/29	328 (400-5%)		
RNP 0.30 DA		834/43	404 (500-7%)		
AUTHORIZATION REQUIRED					

