

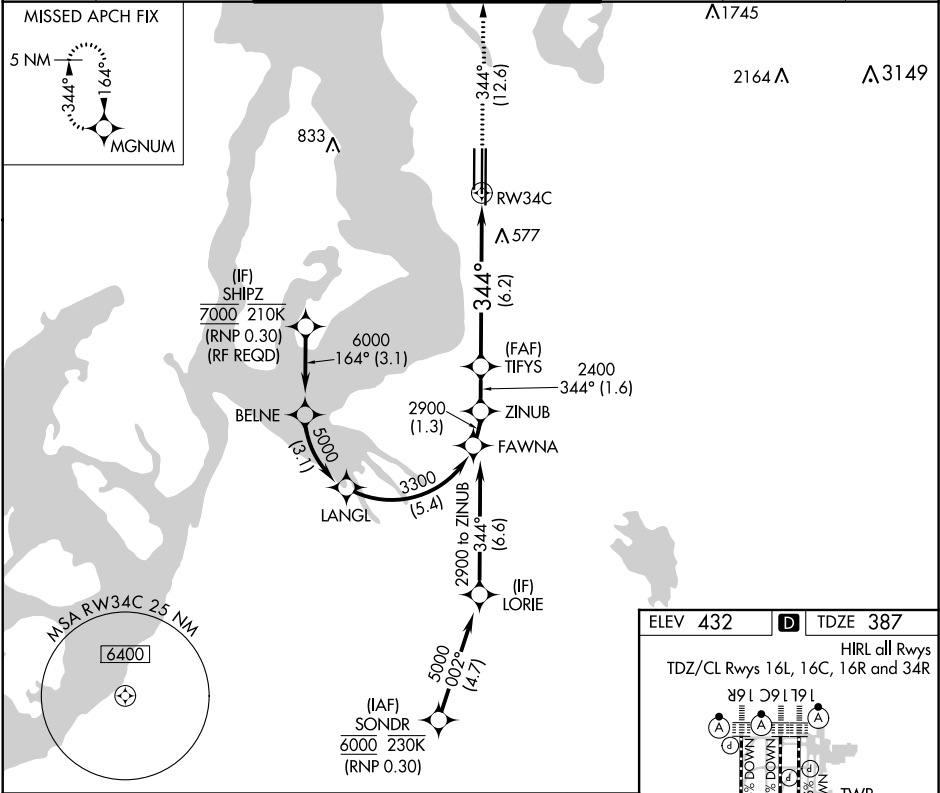
APP CRS	Rwy Idg	9426
344°	TDZE	387
	Apr Elev	432

RNAV (RNP) Z RWY 34C

SEATTLE-TACOMA INTL (SEA)

RNP AR APCH.	MALSR	MISSED APPROACH: Climb to 5000 on track 344° to MGNUM and hold, continue climb-in-hold to 5000.
▼ For uncompensated Baro-VNAV systems, procedure NA below -6°C or above 54°C. Simultaneous approach authorized except arrivals at SHIPZ. Use of FD or AP required during simultaneous operations.		

D-ATIS	SEATTLE APP CON	SEATTLE TOWER	GND CON	CLNC DEL	CPDLC
118.0	133.65 273.45	119.9 239.3 (Rwys 16L, 16C, 34C, 34R) 120.95 239.3 (Rwys 16R, 34L)	121.7	128.0	



ZINUB		VGSi and RNAV glidepath not coincident (VGSi Angle 3.00/TCH 73).		5000	MGNUM
2900		344°		tr 344°	
2400		2400		See planview for multiple IF locations.	
GP 3.00°		TCH 56		RWY 34C	
1.6 NM		6.2 NM			
CATEGORY	A	B	C	D	
RNP 0.30 DA	829/50 442 (400-1)				
AUTHORIZATION REQUIRED					

