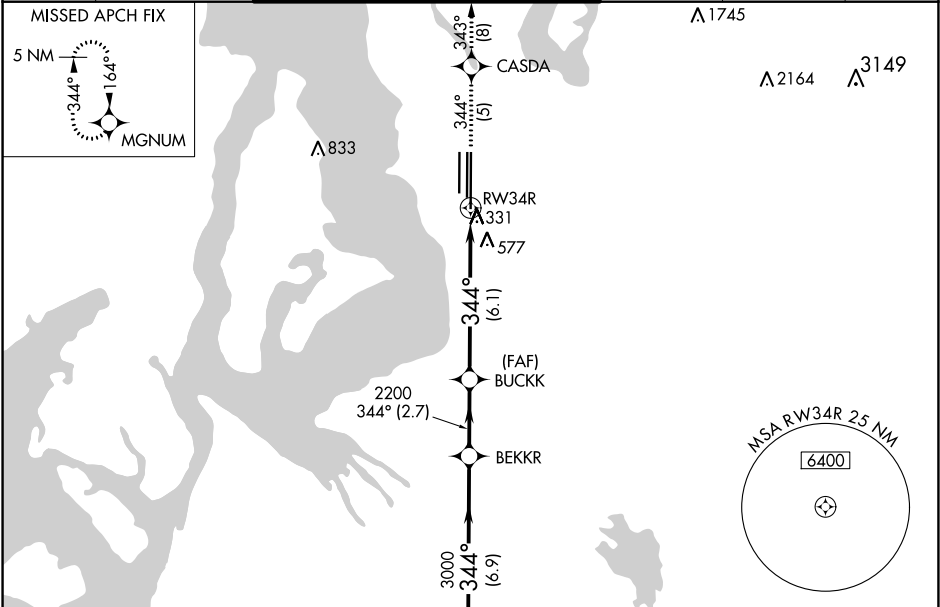


APP CRS	Rwy Idg	11901
344°	TDZE	372
	Apf Elev	432

RNAV (RNP) Z RWY 34R
SEATTLE-TACOMA INTL (SEA)

RNP AR APCH.	MALSR	MISSED APPROACH: Climb to 5000 on track 344° to CASDA and on track 343° to MGNUM and hold, continue climb-in-hold to 5000.
Simultaneous approach authorized. For uncompensated Baro-VNAV systems, procedure NA below -6°C or above 54°C. Use of FD or AP required during simultaneous operations. For inop ALS, increase RNP 0.28 all Cats visibility to 1½ SM. Inop table does not apply to RNP 0.30.		

D-ATIS	SEATTLE APP CON	SEATTLE TOWER	GND CON	CLNC DEL	CPDLC
118.0	133.65 273.45	119.9 239.3 (Rwys 16L, 16C, 34C, 34R) 120.95 239.3 (Rwys 16R, 34L)	121.7	128.0	



MISSED APCH FIX		5 NM		344°		164°		MGNUM	
ELEV 432		D		TDZE 372		HIRL all Rwys		TDZ/CL Rwys 16L, 16C, 16R and 34R	
NEEL		BEKKR		BUCKK		RW34R			
5000		3000		2200		6.9 NM		2.7 NM	
GP 2.75°		TCH 60							
CATEGORY		A		B		C		D	
RNP 0.28 DA		867/50		495 (500-1)					
RNP 0.30 DA		880-1½		508 (500-1½)					
AUTHORIZATION REQUIRED									