

WAAS CH 86910 W16D	APP CRS 164°	Rwy Idg 8500 TDZE 415 Apt Elev 433
--	------------------------	---

RNAV (GPS) Y RWY 16R
SEATTLE-TACOMA INTL (SEA)

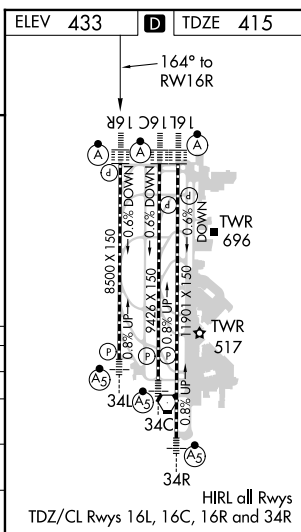
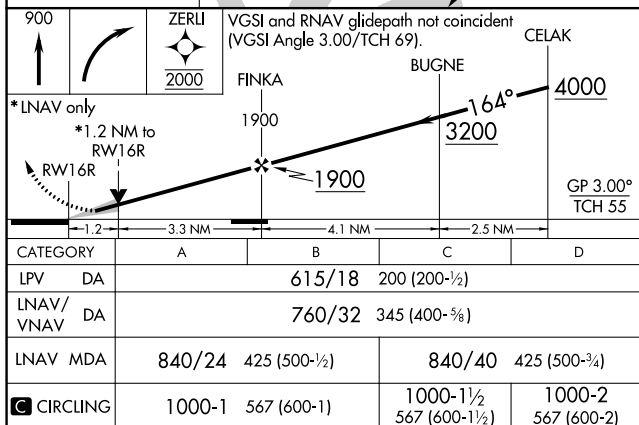
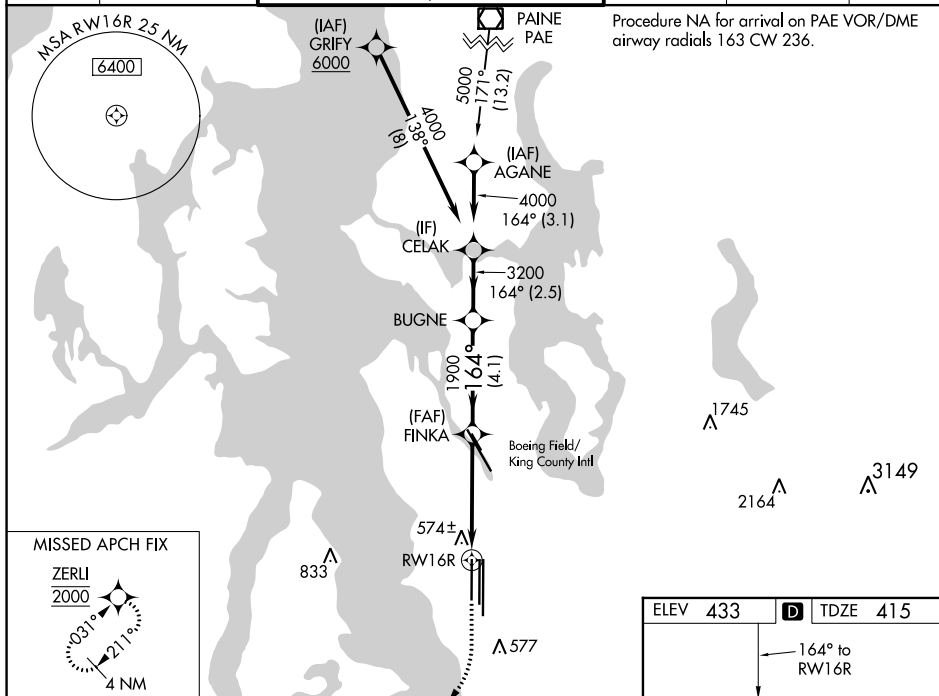
T For uncompensated Baro-VNAV systems, LNAV/VNAV NA below -6°C (22°F) or above 54°C (130°F). Simultaneous approach authorized with Rwy 16L. DME/DME RNP-0.3 NA. LNAV procedure NA during simultaneous operations. Use of FD or AP providing RNAV track guidance required during simultaneous operations.

ALSF-2



MISSED APPROACH: Climb to 900 then climbing right turn direct ZERLI to cross ZERLI at 2000 and hold.

D-ATIS 118.0	SEATTLE APP CON 133.65 273.45	SEATTLE TOWER 119.9 239.3 (Rwys 16L, 16C, 34C, 34R) 120.95 239.3 (Rwys 16R, 34L)	GND CON 121.7	CLNC DEL 128.0	CPDLC
-----------------	----------------------------------	--	------------------	-------------------	-------



RNAV (GPS) Y RWY 16R