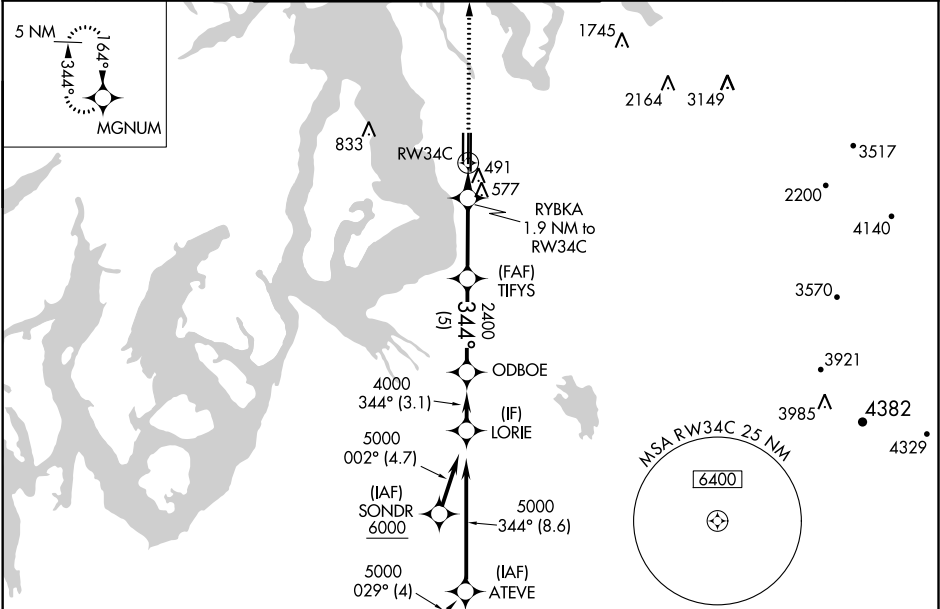


WAAS CH 77710 W34B	APP CRS 344°	Rwy Idg 9426 TDZE 387 Apt Elev 432
--	------------------------	---

RNAV (GPS) Y RWY 34C

SEATTLE-TACOMA INTL (SEA)

RNP APCH. Simultaneous approach authorized with Rwy 34L. LNAV procedure NA during simultaneous operations. Use of FD or AP providing RNAV track guidance required during simultaneous operations. For uncompensated Baro-VNAV systems, LNAV/VNAV NA below -6°C (22°F) or above 54°C (130°F).			MALSR 	MISSED APPROACH: Climb to 5000 direct MGNUM and hold, continue climb-in-hold to 5000.	
D-ATIS 118.0	SEATTLE APP CON 133.65 273.45	SEATTLE TOWER 119.9 239.3 (Rwys 16L, 16C, 34C, 34R) 120.95 239.3 (Rwys 16R, 34L)	GND CON 121.7	CLNC DEL 128.0	CPDLC



Procedure NA for arrivals at CIDUG on V495 southbound.

VGSI and RNAV glidepath not coincident (VGSI Angle 3.00/TCH 73).					5000 MGNUM
					*LNAV only
CATEGORY	A	B	C	D	
LPV DA		610/24	223 (200-½)		
LNAV/VNAV DA		839/50	452 (500-1)		
LNAV MDA	880/24	493 (500-½)	880/55	493 (500-1)	
CIRCLING	1000-1	568 (600-1)	1000-1½ 568 (600-1½)	1000-2 568 (600-2)	

