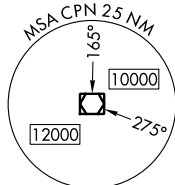


ILS or LOC RWY 15
BERT MOONEY (BTM)


Circling NA northeast of Rwy 15-33. DME required.
S-ILS 15 for inop ALS, increase all Cats visibility to 2½ SM.
#S-ILS 15 for inop ALS, increase Cat C/D visibility to 1 SM.
#S-LOC 15 for inop ALS, increase Cat C/D visibility to 1¾ SM.

MISSED APPROACH: (Do not exceed 190K until 7100) Climb to 7100 then climbing right turn to 11000 direct CPN VOR/DME and hold, continue climb-in-hold to 11000. #Missed approach requires minimum climb of 365 feet per NM to 8700.

UNICOM
123.0 (CTAF) **L**

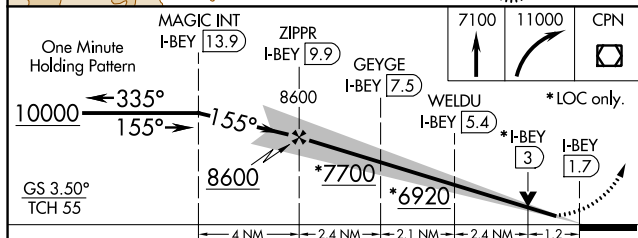
DME REQUIRED

Procedure NA for arrivals at CPN
VOR/DME on V257 southbound.

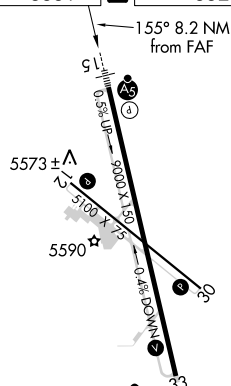
COPPERTOWN
11.6 CPN 
Chap. 53

LOCALIZER 110.9
I-BEY
Chan 46

WHITEHALL
13.7 HIA ::
Chan 84



ELEV 5551	D	TDZE 5523
-----------	----------	-----------

REIL Rlys 12 and 30 **L** ³³
MIRL Rlys 12-30 and 15-33 **L**

FAF to MAP 8.2 NM

Knots	60	90	120	150	180
Min:Sec	8:12	5:28	4:06	3:17	2:44

ILS or LOC RWY 15