

WAAS CH <b>56341</b> <b>W15A</b>	APP CRS <b>155°</b>	Rwy Idg TDZE <b>5523</b> Apt Elev <b>5551</b>
--	------------------------	---

RNAV (GPS) RWY 15  
BERT MOONEY (BTM)

**⚠** Circling NA northeast of Rwy 15-33. DME/DME RNP-0.3 NA. For inop ALS, increase LPV all Cats visibility to 2½ SM, increase LPV# Cat C/D visibility to ¾ SM. Inop table does not apply to LNAV Cats C/D.

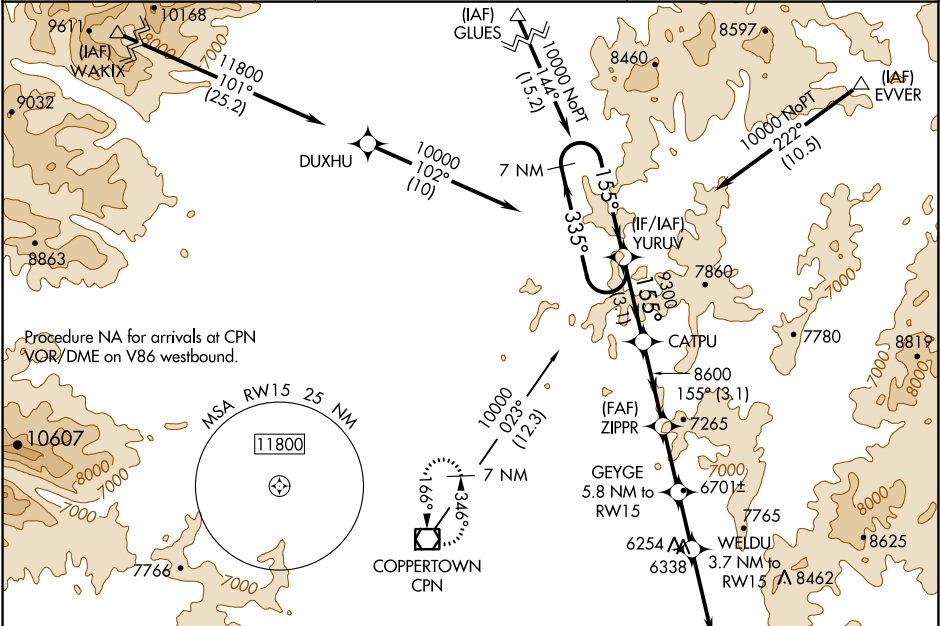
**⚠** -25°C

**MALSR**

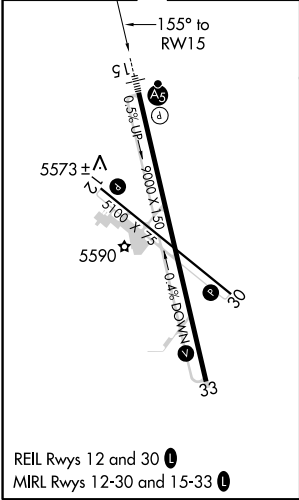
**AS**

**MISSED APPROACH:** (Do not exceed 190K until 7100) Climb to 7100 then climbing right turn to 11000 direct CPN VOR/DME and hold, continue climb-in-hold to 11000. #Missed approach requires minimum climb of 365 feet per NM to 8700.

ASOS <b>135.175</b>	SALT LAKE CENTER <b>132.4 338.3</b>	UNICOM <b>123.0 (CTAF) 0</b>
------------------------	--	---------------------------------



ELEV 5551	<b>D</b>	TDZE 5523
-----------	----------	-----------



7 NM Holding Pattern		YURUV	CATPU	ZIPPR	GEYGE 5.8 NM to RW15	WELDU 3.7 NM to RW15	CPN
10000		←335° 155°→	9300	8600	8600	*7700	*6920
GP 3.50° TCH 55			3.1 NM	3.1 NM	2.4 NM	2.1 NM	3.7 NM
CATEGORY	A	B	C	D			
LPV DA	6281-1 $\frac{7}{8}$ 758 (800-1 $\frac{1}{2}$ )						
LPV DA#	5825-1 $\frac{1}{2}$ 302 (300-1 $\frac{1}{2}$ )						
LNAV MDA	6780-3 $\frac{3}{4}$ 1257 (1300-3 $\frac{3}{4}$ )	6780-1 1257 (1300-1)	6780-3 1257 (1300-3)				
<b>C</b> CIRCLING	6780-1 $\frac{1}{4}$ 1229 (1300-1 $\frac{1}{4}$ )	7060-3 1509 (1600-3)		7120-3 1569 (1600-3)			

NW-1, 03 DEC 2020 to 31 DEC 2020

NW-1, 03 DEC 2020 to 31 DEC 2020