

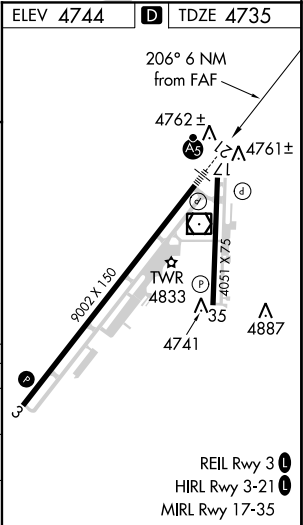
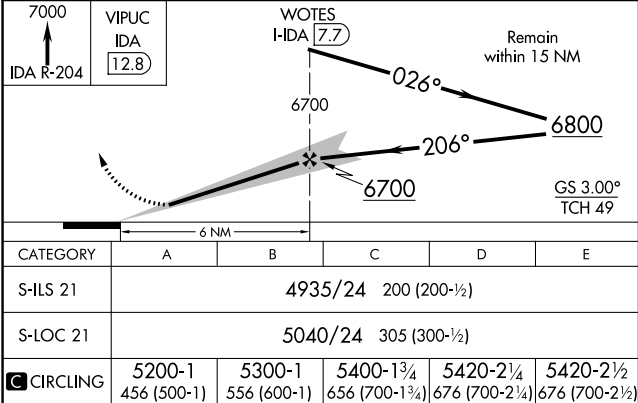
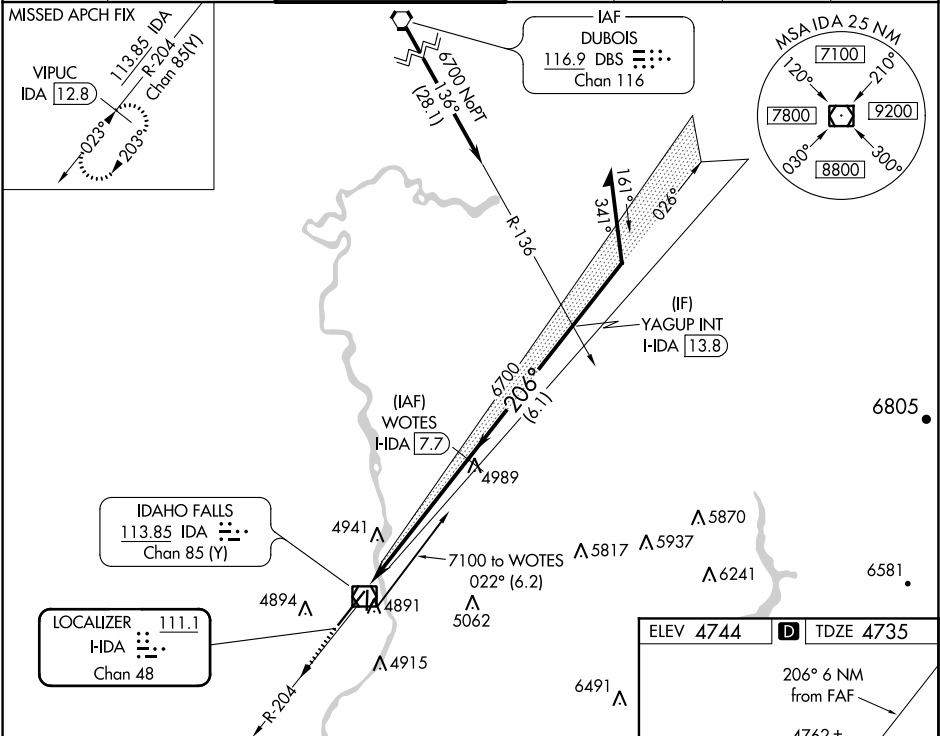
LOC/DME IDA	APP CRS	Rwy Idg	9002
111.1	206°	TDZE	4735
Chan 48		Apt Elev	4744

ILS or LOC RWY 21

IDAHO FALLS RGNL (IDA)

DME required.	MALSR	MISSED APPROACH: Climb to 7000 on IDA VOR/DME R-204 to VIPUC/12.8 DME and hold.
<div><div></div><div>For inop ALS, increase S-ILS 21 all Cats visibility to RVR 4000 and S-LOC 21 all Cats visibility to RVR 5500. *RVR 1800 authorized with the use of FD or AP or HUD to DA.</div></div>	<div><div></div><div></div></div>	

ATIS	SALT LAKE CENTER	IDAHO FALLS TOWER*	GND CON	CLNC DEL	GCO	UNICOM
135.325	128.35 239.25	118.5 (CTAF) 0 257.8	121.7	121.7	121.725	122.95



NW-1, 03 DEC 2020 to 31 DEC 2020

NW-1, 03 DEC 2020 to 31 DEC 2020