

WAAS CH 97501 W03A	APP CRS 026°	Rwy Idg 9002 TDZE 4744 Apt Elev 4744
--	------------------------	---

RNAV (GPS) Y RWY 3
IDAHO FALLS RGNL (IDA)

RNP APCH.

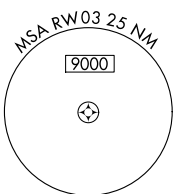
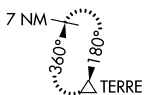


For uncompensated Baro-VNAV systems, LNAV/VNAV NA below -27°C (-16°F) or above 49°C (121°F).

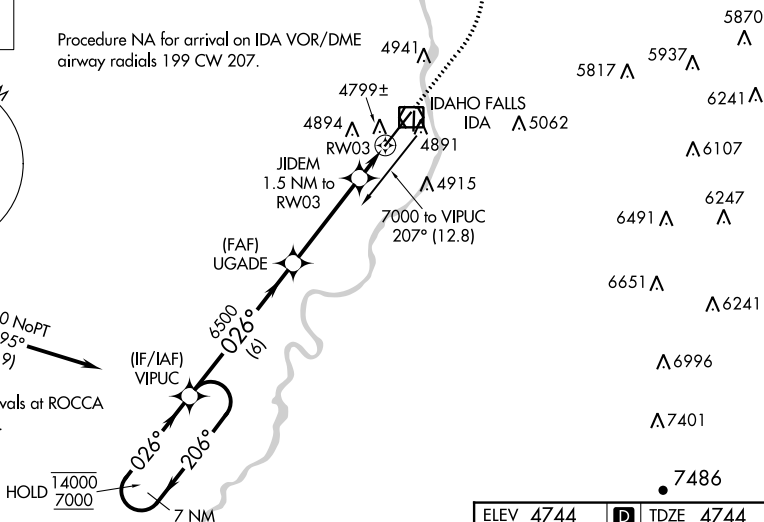
MISSED APPROACH: Climb to 5200 then climbing left turn to 7500 direct TERRE and hold.

ATIS 135.325	SALT LAKE CENTER 128.35 239.25	IDAHO FALLS TOWER★ 118.5 (CTAF) 0 257.8	GND CON 121.7	CLNC DEL 121.7	GCO 121.725	UNICOM 122.95
-----------------	-----------------------------------	--	------------------	-------------------	----------------	------------------

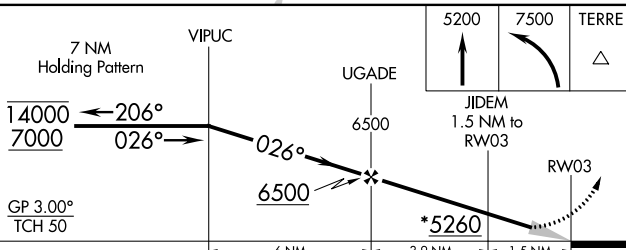
MISSED APCH FIX




Procedure NA for arrival on I
airway radials 199 CW 207.



Procedure NA for arrivals at ROCCA
on V257 south bound.



CATEGORY	A	B	C	D
LPV DA	4944- ³ / ₄ 200 (200- ³ / ₄)			
LNAV/ VNAV DA	4994- ³ / ₄ 250 (300- ³ / ₄)			
LNAV MDA	5060-1 316 (400-1)			
 CIRCLING	5200-1 456 (500-1)	5300-1 556 (600-1)	5400-1 ³ / ₄ 656 (700-1 ³ / ₄)	5420-2 ¹ / ₄ 676 (700-2 ¹ / ₄)

