

APP CRS  
**120°**

Rwy Idg  
TDZE  
**1225**

Apt Elev  
**1249**

**RNAV (RNP) RWY 12**

PANGBORN MEMORIAL (EAT')

▼

▲

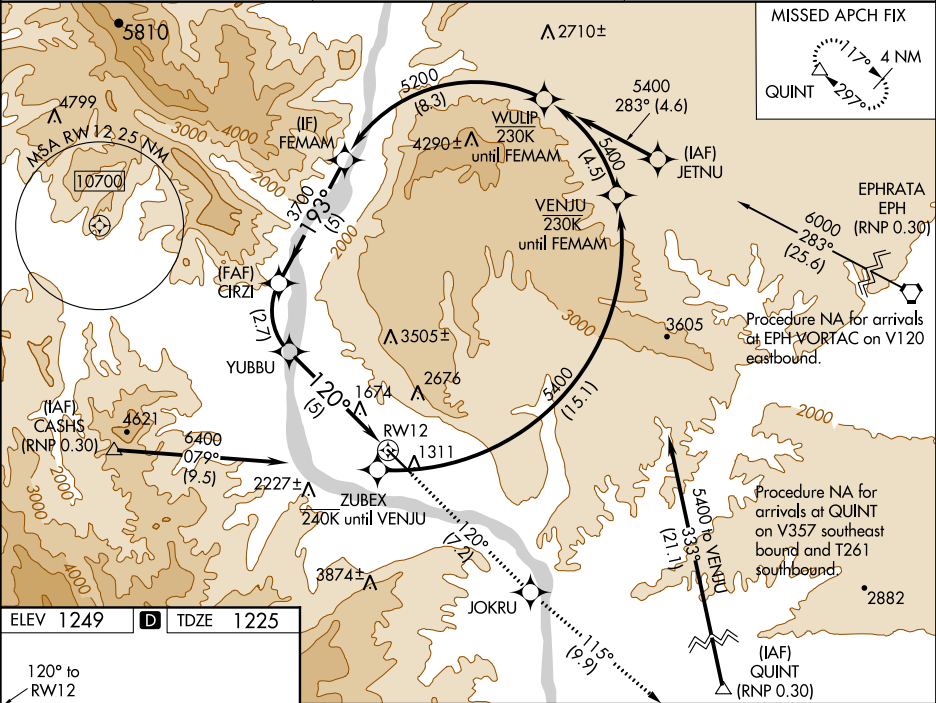
✳

-7°C

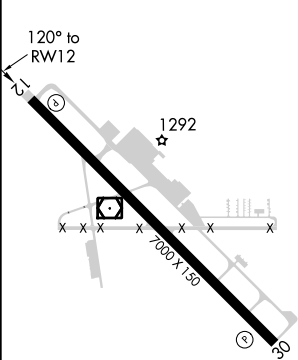
For uncompensated Baro-VNAV systems, procedure NA below -10°C (14°F) or above 54°C (130°F). RF required. GPS required. FD or HUD required.

MISSED APPROACH: Climb to 5400 on track 120° to JOKRU and on track 115° to QUINT and hold.  
\*Missed approach requires a minimum climb of 319 feet per NM to 3700.  
#Missed approach requires a minimum climb of 295 feet per NM to 3700.

ASOS <b>119.925</b>	SEATTLE CENTER <b>126.1 291.6</b>	UNICOM <b>123.0 (CTAF) 0</b>
------------------------	--------------------------------------	---------------------------------



ELEV 1249	D	TDZE 1225
-----------	---	-----------



HIRL Rwy 12-30 0  
REIL Rwy 12 and 30 0

VGSI and RNAV glidepath not coincident (VGSI Angle 3.60/TCH 60).

5400 JOKRU tr 120°

QUINT tr 115°

FEMAM

CIRZI

YUBBU

RWY 12

5200

3700

2854

GP 3.00°

TCH 45

5 NM

2.7 NM

5 NM

CATEGORY	A	B	C	D
RNP 0.15 DA*		1995-3	770 (800-3)	
RNP 0.19 DA#		2072-3	847 (900-3)	
RNP 0.30 DA		2417-5	1192 (1200-5)	

**AUTHORIZATION REQUIRED**