

WAAS CH 45599 W17A	APP CRS 176°	Rwy Idg 5500 TDZE 207 Apt Elev 208
--	------------------------	---

RNAV (GPS) RWY 17

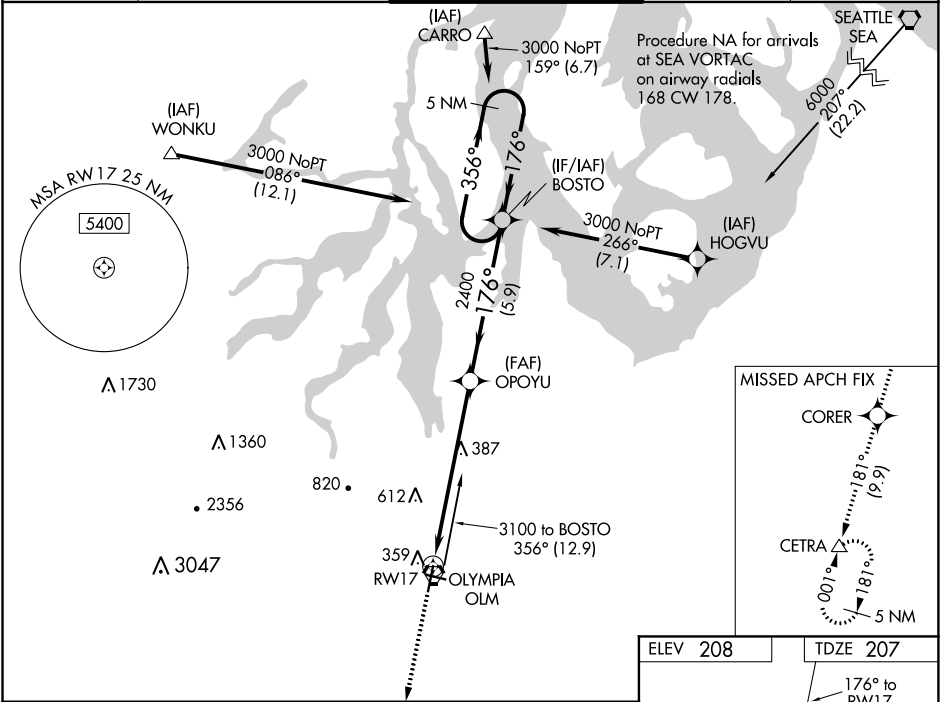
OLYMPIA RGNL (OLM)

For uncompensated Baro-VNAV systems, LNAV/VNAV NA below -9°C (16°F) or above 54°C (130°F). DME/DME RNP-0.3 NA.
For inop ALS; increase LNAV/VNAV visibility all Cats to 1½ SM.
Increase LNAV Cats C/D to 1¾ SM.

MALSR

MISSED APPROACH: Climb to 4000 direct CORER and on track 181° to CETRA and hold, continue climb-in-hold to 4000.

ATIS ★ 135.725	SEATTLE APP CON 121.1 290.9	OLYMPIA TOWER ★ 124.4 (CTAF) 0 254.25	GND CON 121.6	UNICOM 122.95
--------------------------	---------------------------------------	---	-------------------------	-------------------------



4000

CORER

CETRA

tr 181°

OPOUY

BOSTO

5 NM Holding Pattern

*LNAV only

*1.3 NM to RWY17

RWY17

2400

356°

176°

3000

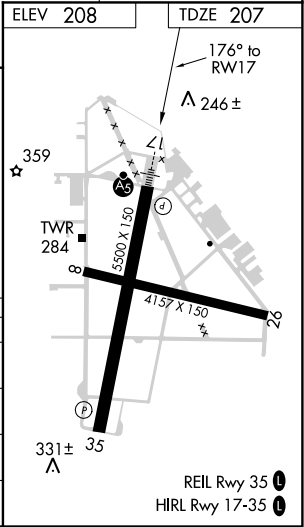
GP 3.00° TCH 53

1.3

5.5 NM

5.9 NM

CATEGORY	A	B	C	D
LPV DA	407-½ 200 (200-½)			
LNAV/VNAV DA	629-¾ 422 (500-¾)			
LNAV MDA	680-½ 473 (500-½)		680-1 473 (500-1)	
CIRCLING	720-1 512 (600-1)	860-1 652 (700-1)	1020-2½ 812 (900-2½)	1020-2¾ 812 (900-2¾)



NW-1, 03 DEC 2020 to 31 DEC 2020

NW-1, 03 DEC 2020 to 31 DEC 2020