

WAAS CH 53709 W07A	APP CRS 068°	Rwy Idg TDZE Apt Elev	4745 3710 3732
--	------------------------	-----------------------------	---

RNAV (GPS) RWY 7

GOODING MUNI (GNG)

RNP APCH.

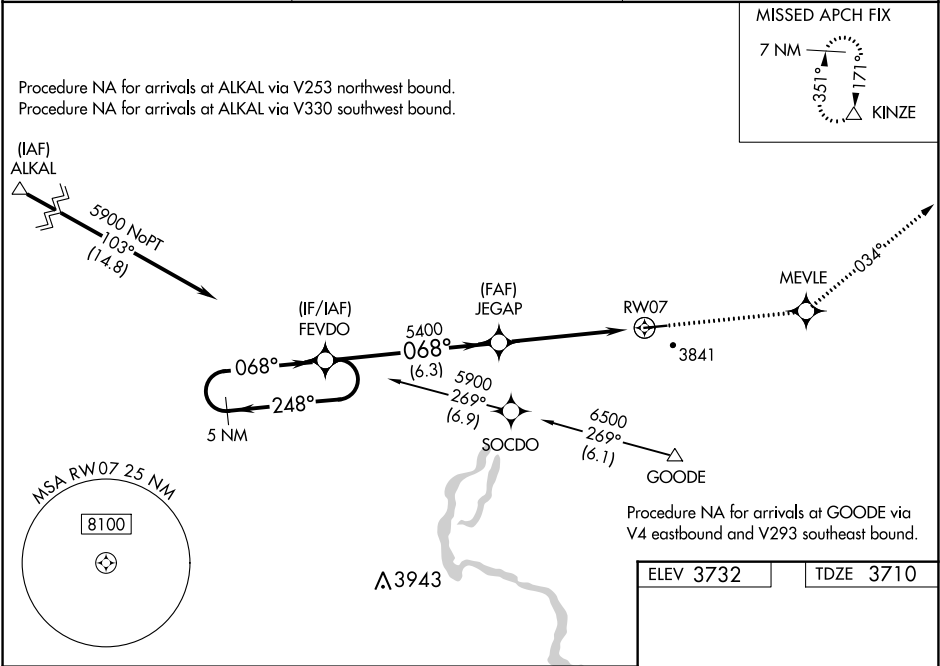
▼

⚠

Rwy 7 helicopter visibility reduction below ¾ SM NA. Baro-VNAV NA when using Jerome County altimeter setting. For uncompensated Baro-VNAV systems, LNAV/VNAV NA below -22°C or above 41°C. Obtain local altimeter setting on CTAF; when not received, use Jerome County altimeter setting and increase all DA 86 feet and all MDA 100 feet. Increase LPV visibility ¼ SM all Cats, LNAV/VNAV visibility ½ SM all Cats, LNAV visibility Cat C and D ½ SM.

MISSED APPROACH: Climb to 7200 direct MEVLE and left turn via 034° track to KINZE and hold.

AWOS-3PT 124.175	SALT LAKE CENTER 118.05 363.0	UNICOM 122.8 (CTAF) 0*
----------------------------	---	----------------------------------



5 NM Holding Pattern

FEVDO

5900

248°

068°

068°

5400

JEGAP

7200

MEVLE

034° tr

KINZE

RW07

GP 3.00°
TCH 40

6.3 NM

5.2 NM

CATEGORY

A

B

C

D

LPV DA

3960-1

250 (300-1)

LNAV/VNAV DA

4049-1¼

339 (400-1¼)

LNAV MDA

4120-1

410 (400-1)

4120-1¼

410 (400-1¼)

068° to RW07

1.4% UP

4745 X 75

25

△ 3779±

△ 3819±

MIRL Rwy 7-25 0*