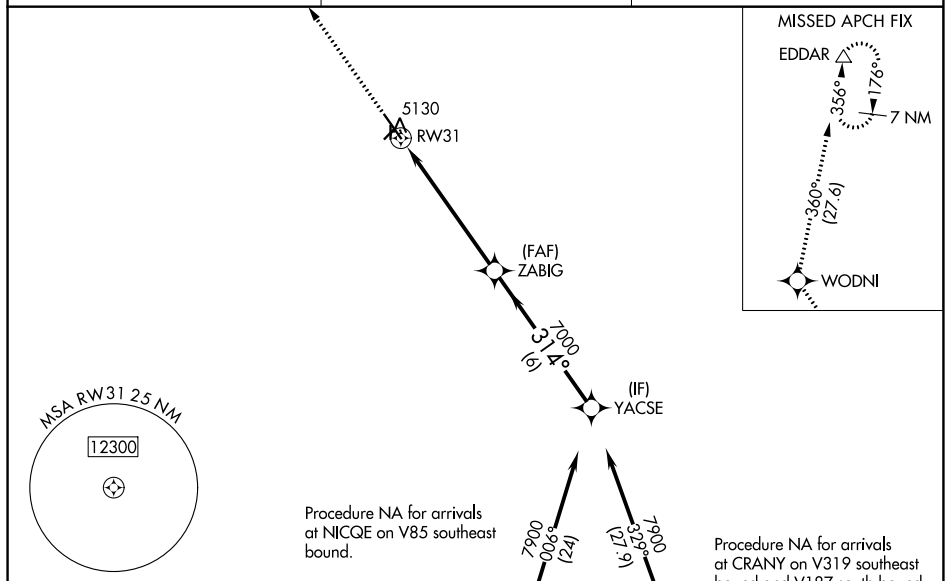


RNAV (GPS) RWY 31
POWELL MUNI (POY)

⚠ Circling NA to Rwy 3, 17, 21 and 35. Baro-VNAV and VDP NA when using Coda altimeter setting. Rwy 31 helicopter visibility reduction below $\frac{3}{4}$ SM NA. **⚠** NA For uncompensated Baro-VNAV systems, LNAV/VNAV NA below -25°C or above 48°C. When local altimeter setting not received, use Coda altimeter setting and increase all DA 54 feet and all MDA 60 feet.

MISSED APPROACH: Climb to 9500
direct WODNI and on track 360° to
FDDAR and hold.

AWOS-3 119,275	SALT LAKE CENTER 127.75 351.9	UNICOM 122.7 (CTAF) 0
--------------------------	---	---------------------------------



NW-1, 03 DEC 2020 to 31 DEC 2020