


WAAS CH 61115 W28A	APP CRS 284°	Rwy Idg 8204 TDZE 5459 Apt Elev 5528
--	------------------------	---


RNAV (GPS) RWY 28
CENTRAL WYOMING RGNL (RIW)

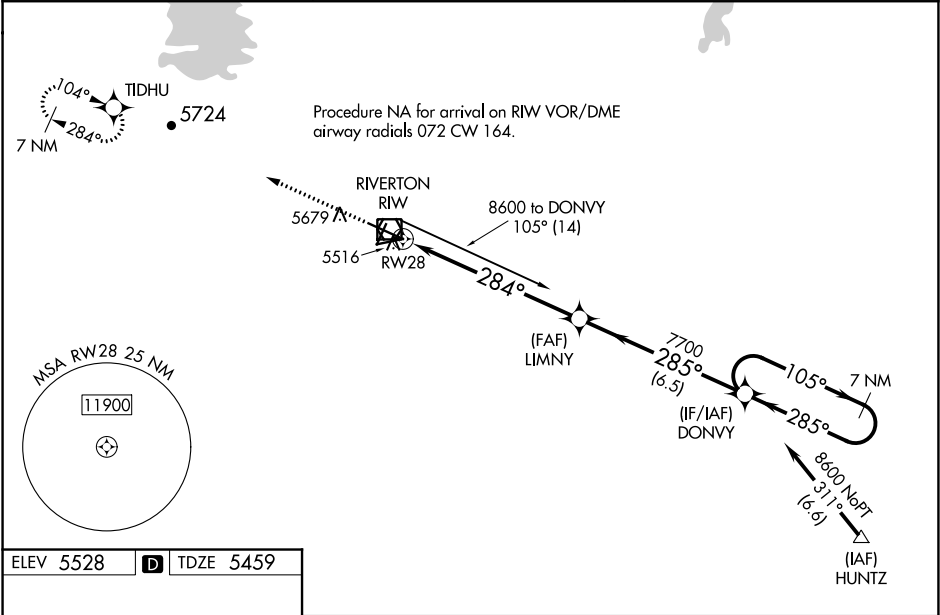
V DME/DME RNP-0.3 NA. Baro-VNAV and VDP NA when using Lander altimeter setting.
A For uncompensated Baro-VNAV systems, LNAV/VNAV NA below -27°C (-16°F) or above 48°C (118°F). For inop MALSR, increase LNAV/VNAV all Cats visibility to ¾ mile and LNAV Cat C and D visibility to 1 mile. When local altimeter setting not received, use Lander altimeter setting: increase LPV DA to 5713 feet, LNAV/VNAV DA to 5763 and all visibilities ½ mile; increase all MDA 60 feet and LNAV Cat C and D visibility ½ mile. For inop MALSR, when using Lander altimeter setting, increase LPV all Cats visibility to ¾ mile and LNAV/VNAV all Cats visibility to 1 mile.

MALSR

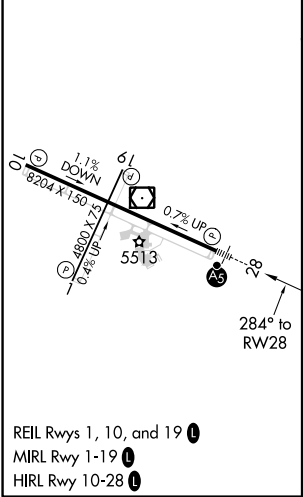


MISSED APPROACH:
Climb to 7900 direct
TIDHU and hold.

ASOS 121.425	SALT LAKE CENTER 133.25 285.6	UNICOM 122.8 (CTAF) 
------------------------	---	---



ELEV 5528	D	TDZE 5459
-----------	----------	-----------




7900 TIDHU

LIMNY 7700

DONVY 7700

8600

GP 3.00°
TCH 50

CATEGORY	A	B	C	D
LPV DA	5659-½ 200 (200-½)			
LNAV/VNAV DA	5709-½ 250 (200-½)			
LNAV MDA	5820-½	361 (400-½)	5820-⅝	361 (400-⅝)
 CIRCLING	6000-1	472 (500-1)	6000-1½ 472 (500-1½)	6120-2 592 (600-2)

NW-1, 03 DEC 2020 to 31 DEC 2020

NW-1, 03 DEC 2020 to 31 DEC 2020