

VOR/DME RIW 114.05 Chan 87(Y)	APP CRS 293°	Rwy Idg TDZE Apt Elev	8204 5459 5528
---	------------------------	-----------------------------	---

VOR RWY 28
CENTRAL WYOMING RGNL (RIW)

T When local altimeter setting not received, use Lander altimeter setting and increase all MDA 60 feet. VDP NA when using Lander altimeter setting.

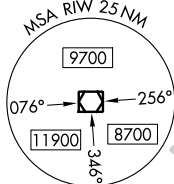
A For inop MALSR, increase S-28 Cat C and D visibility to 1 $\frac{3}{4}$ miles.



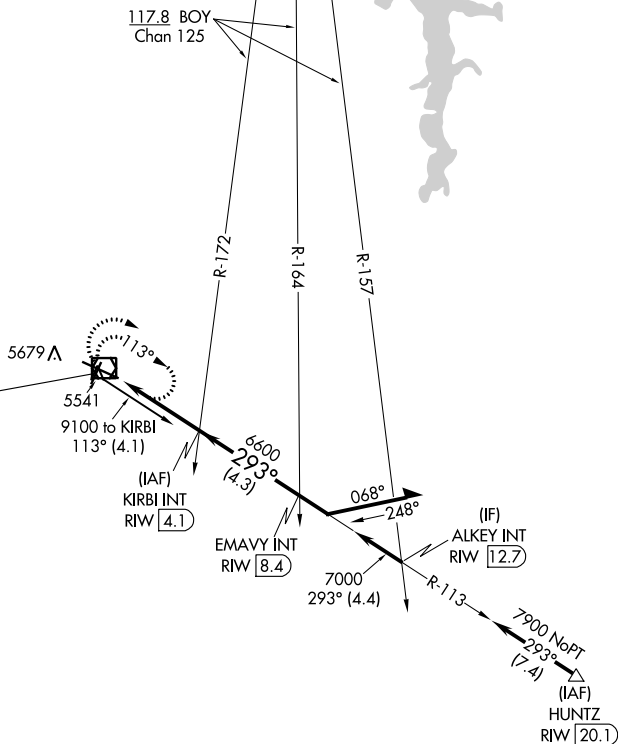
MISSED APPROACH: Climb to 7700 in RIW VOR/DME holding pattern.

ASOS 121.425	SALT LAKE CENTER 133.25 285.6	UNICOM 122.8 (CTAF) 0
------------------------	---	---------------------------------

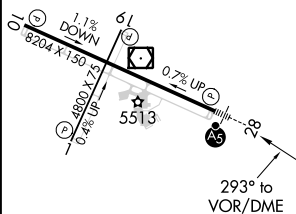
• 6043



RIVERTON
114.05 RIW ::
Chan 87(Y)



ELEV 5528	D	TDZE 5459
-----------	----------	-----------



REIL Rwy 1, 10 and 19 **L**
MIRL Rwy 1-19 **L**
HIRL Rwy 10-28 **L**

