

WAAS CH 82129 W16A	APP CRS 162°	Rwy Idg 5000 TDZE 176 Apt Elev 177
--	------------------------	---

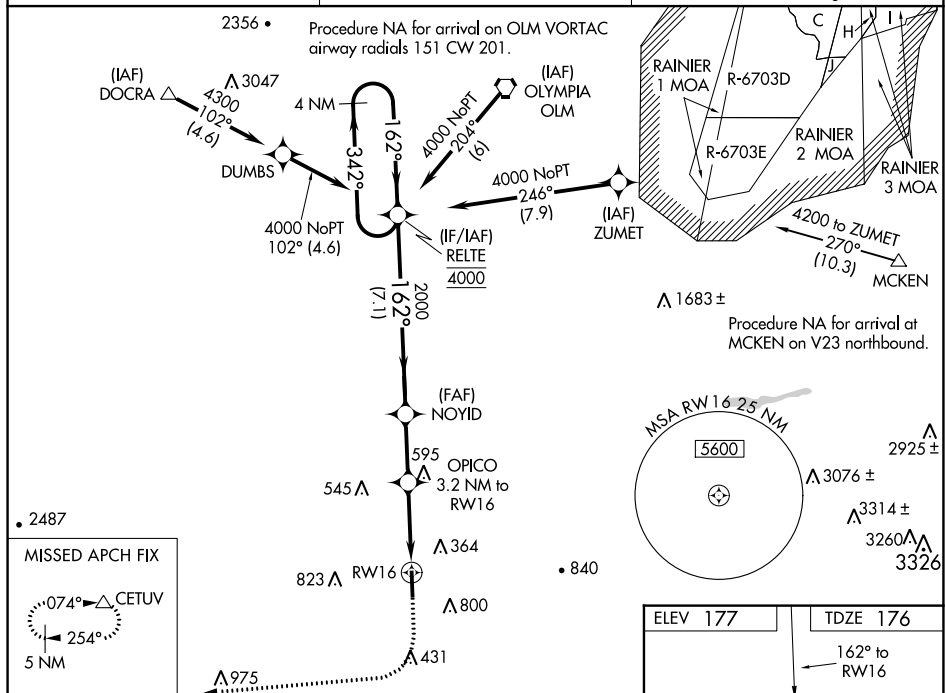
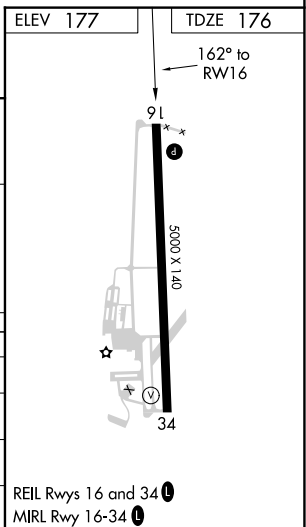
RNAV (GPS) RWY 16

CHEHALIS-CENTRALIA (CLS)

- ⚠** For uncompensated Baro-VNAV systems, LNAV/VNAV NA below -15°C (5°F) or above 54°C (130°F). Circling NA northeast of Rwy 16-34. DME/DME RNP-0.3 NA. Baro-VNAV and VDP NA when using Olympia altimeter setting. When local altimeter setting not received, use Olympia altimeter setting: increase LPV DA to 522 feet, LNAV/VNAV DA to 878 feet and all MDA 60 feet; increase LPV all Cats visibility $\frac{1}{2}$ SM, LNAV Cat B $\frac{1}{4}$ SM, LNAV Cats C/D $\frac{1}{2}$ SM and Circling Cat B $\frac{1}{2}$ SM. Rwy 16 helicopter visibility reduction below $\frac{1}{4}$ SM NA.

MISSED APPROACH:
Climb to 900 then climbing
right turn to 5000 direct
CETUV and hold, continue
climb-in-hold to 5000.

AWOS-3 118.025	SEATTLE APP CON 121.1 377.15	UNICOM 122.8 (CTAF) 0
--------------------------	--	---------------------------------

[illegible]

RNAV (GPS) RWY 16