

WAAS CH 78207 W15A	APP CRS 146°	Rwy Idg TDZE Apt Elev	5006 2193 2193
--	------------------------	-----------------------------	---

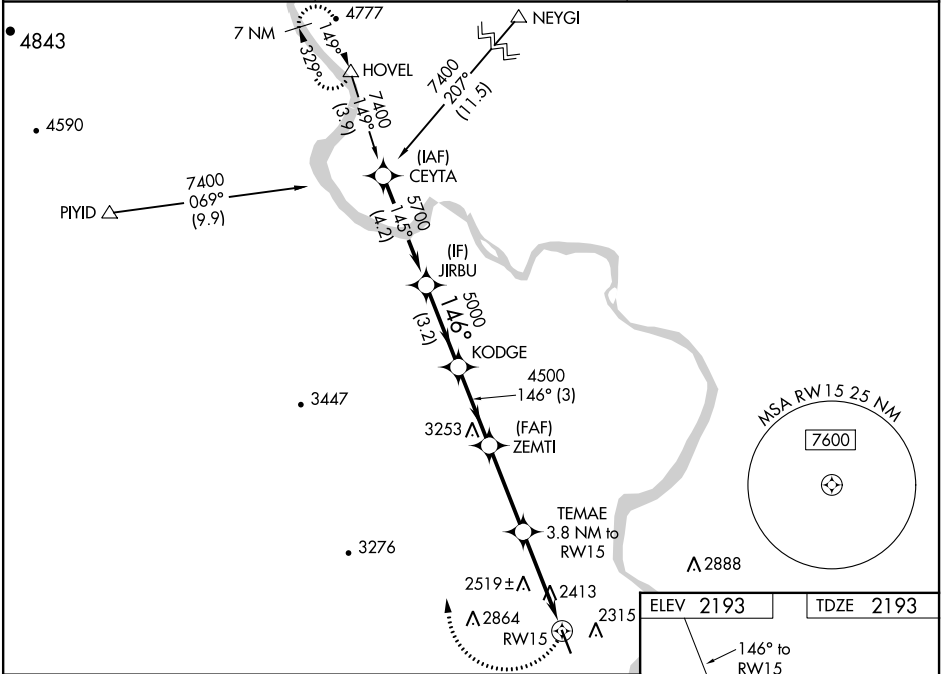
RNAV (GPS) RWY 15

ONTARIO MUNI (ON0)

Baro-VNAV NA when using Caldwell altimeter setting. For uncompensated Baro-VNAV systems, LNAV/VNAV NA below -18°C (0°F) or above 54°C (130°F). DME/DME RNP-0.3 NA.
When local altimeter setting not received, use Caldwell altimeter setting and increase LPV DA to 2867 feet, LNAV/VNAV DA to 2911 feet, and all MDA 100 feet; increase LPV visibility, all Cats by ½ SM, increase LNAV visibility Cats C/D and Circling Cat C by ¼ SM. Rwy 15 helicopter visibility reduction below 1 SM NA. Straight-in Rwy 15 NA at night, Circling Rwy 15 NA at night.

MISSED APPROACH: Climbing right turn to 9000 direct HOVEL and hold, continue climb-in-hold to 9000.

ASOS 135.275	SALT LAKE CENTER 128.05 306.95	UNICOM 122.8 (CTAF) 0
------------------------	--	---------------------------------



JIRBU		KODGE		ZEMTI		TEMAE	
5700		5000		4500		3440	
GP 3.00°		146°		146°		146°	
TCH 40		3.2 NM		3 NM		3.3 NM	
CATEGORY		A		B		C	
LPV DA		2769-2		576 (600-2)			
LNAV/VNAV DA		2814-2½		621 (700-2½)			
LNAV MDA		2780-1		587 (600-1)		2780-1¾ 587 (600-1¾)	
CIRCLING		2760-1 567 (600-1)		2800-1 607 (700-1)		3120-2¾ 927 (1000-2¾)	
						3240-3 1047 (1100-3)	

