

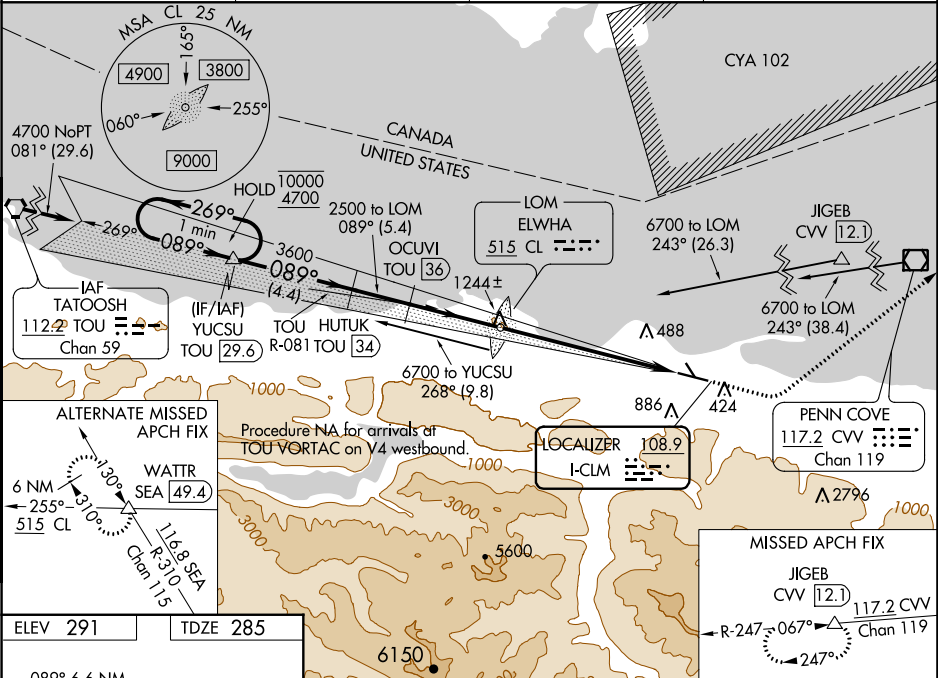
LOC I-CLM	APP CRS	Rwy Idg	6347
108.9	089°	TDZE	285
		Apt Elev	291

ILS or LOC RWY 8

WILLIAM R FAIRCHILD INTL (CLM)

DME required.	MALSR	MISSED APPROACH: Climb to 1000 then climbing left turn to 5400 on heading 030° and on CVV VOR/DME R-247 to JIGEB/ CVV 12.1 DME and hold, continue climb-in-hold to 5400.
<div>NA</div> <div>Circling NA south of Rwy 8-26. Night Landing: Rwy 13, 31 NA. DME from TOU VORTAC. Simultaneous reception of I-CLM and TOU DME required. For inop ALS, increase S-LOC 8 Cat C/D visibility to 1¾ mile.</div>	<div>AG</div> <div></div>	

ASOS	WHIDBEY APP CON	CLNC DEL	UNICOM
135.175	118.2 285.65	124.15	122.975 (CTAF) 1



089° 6.6 NM from FAF

278 ±

32.55 X .50

1.43 UP

63.47 X 1.50

424 ±

355

MIRL Rwy 8-26

REIL Rwy 26

FAF to MAP 6.6 NM					
Knots	60	90	120	150	180
Min:Sec	6:36	4:24	3:18	2:38	2:12

VGSI and ILS glidepath not coincident (VGSI Angle 3.00/TCH 50).				
One Minute Holding Pattern				
YUCSU TOU 29.6 HUTUK TOU 34 OCUVI TOU 36				
10000 4700 269° 089° 089° 3600 3500 2483 2500				
GS 3.00° TCH 54 4.4 NM 2.1 NM 3.3 NM 6.6 NM				
CATEGORY	A	B	C	D
S-ILS 8	496-½ 211 (300-½)			
S-LOC 8	900-½ 615 (700-½)		900-1¾ 615 (700-1¾)	
CIRCLING	900-1 609 (700-1)		900-1¾ 609 (700-1¾)	
	1000-2¼ 709 (800-2¼)			