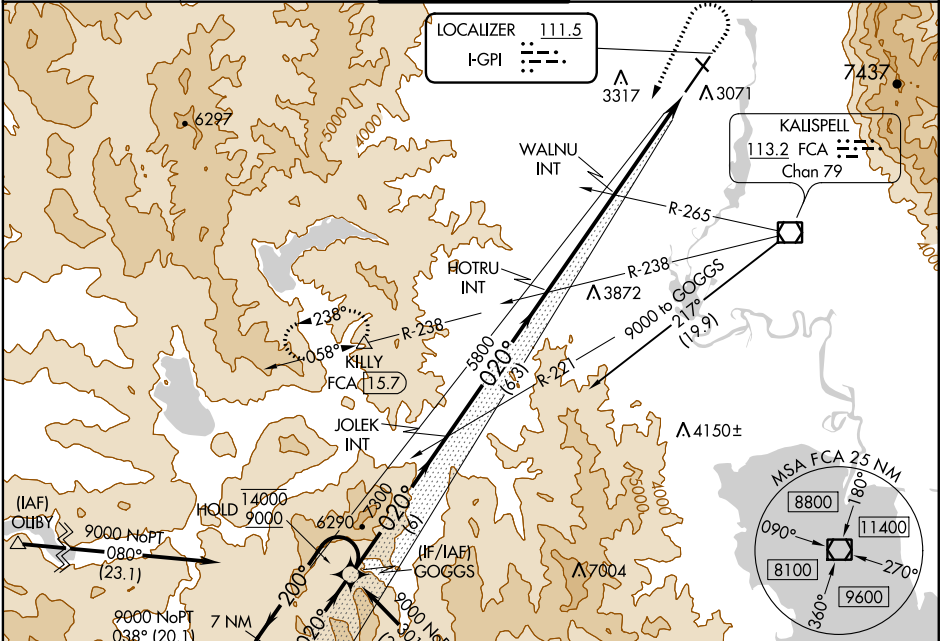


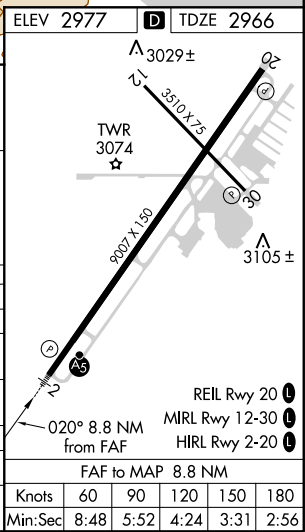
LOC I-GPI 111.5	APP CRS 020°	Rwy Idg TDZE Apt Elev 9007 2966 2977
---------------------------	------------------------	--

ILS or LOC RWY 2
GLACIER PARK INTL (GPI)

DME required. RNAV 1-GPS or RADAR required for procedure entry.		MALSR	MISSED APPROACH: Climb to 4100 then climbing left turn to 12000 on heading 190° and FCA VOR/DME R-238 to KILLY/15.7 DME and hold, continue climb-in-hold to 12000.	
Inop table does not apply to S-LOC 2 Cats C/D.				
ATIS 132.625	SALT LAKE CENTER 133.4 285.4	GLACIER TOWER★ 124.55 (CTAF)	GND CON 121.6	UNICOM 122.95



7 NM Holding Pattern		GOGGS		JOLEK INT		HOTRU INT		WALNU INT		KILLY	
14000 ← 200°		9000 → 020°		020°		5800		WALNU INT		*LOC only	
GS 3.00°		TCH 51		5800		*4440					
6 NM		6.3 NM		4.3 NM		4.5 NM					
CATEGORY	A		B		C		D				
S-ILS 2			3166-1/2		200 (200-1/2)						
S-LOC 2	4440-3/4 1474 (1500-3/4)		4440-1 1474 (1500-1)		4440-3		1474 (1500-3)				
CIRCLING	4440-1 1/4 1463 (1500-1 1/4)		4440-1 1/2 1463 (1500-1 1/2)		4440-3		1463 (1500-3)				
WALNU FIX MINIMUMS (DUAL VOR RECEIVERS REQUIRED)											
S-LOC 2	3520-1/2		554 (600-1/2)		3520-1 1/8		554 (600-1 1/8)				
CIRCLING	3520-1 543 (600-1)		3580-1 603 (700-1)		3640-1 3/4 663 (700-1 3/4)		3760-2 1/2 783 (800-2 1/2)				



NW-1, 03 DEC 2020 to 31 DEC 2020

NW-1, 03 DEC 2020 to 31 DEC 2020