

VOR/DME RWY 30  
GLACIER PARK INTL (GPI)

**MISSED APPROACH:** Climb to 4000 then climbing left turn to 9300 via heading 130° and FCA VOR/DME R-150 to ITONE/14.8 DME and hold, continue climb-in-hold to 9300.

ATIS <b>132.625</b>	SALT LAKE CENTER <b>133.4 285.4</b>	GLACIER TOWER★ <b>124.55 (CTAF) 0</b>	GND CON <b>121.6</b>	UNICOM <b>122.95</b>
------------------------	--	--	-------------------------	-------------------------

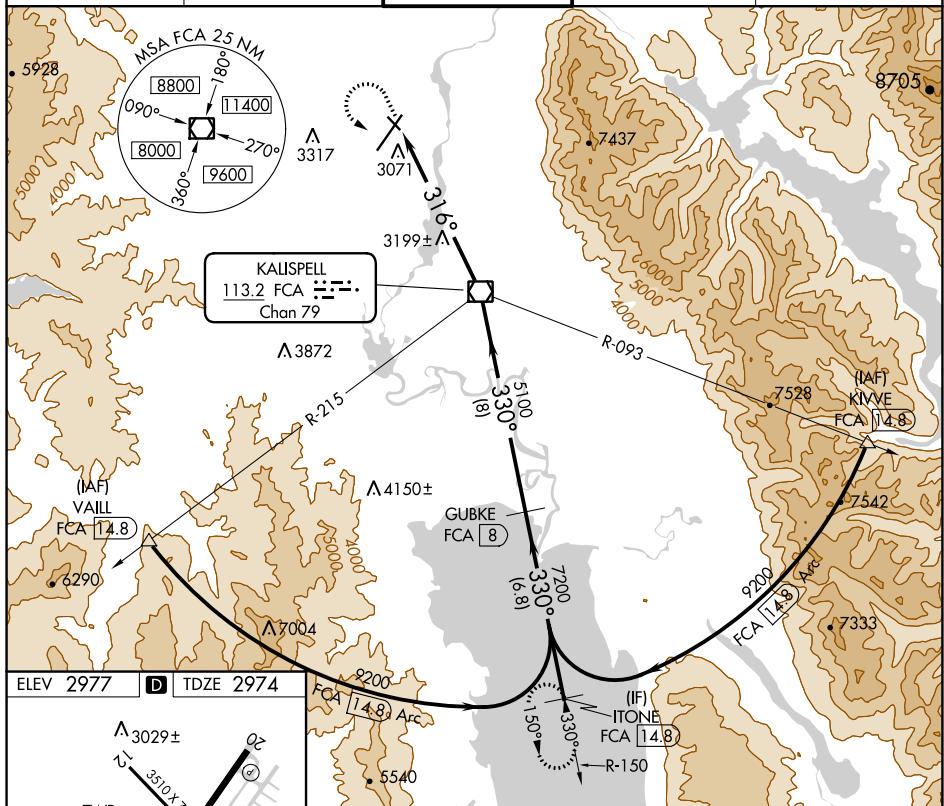


Diagram illustrating the REIL Rwy 20 approach profile. The profile shows a 316° descent from 3105 feet to 5100 feet, followed by a 330° climb to 9200 feet. Key waypoints include FCA 6.5, FCA 14.8, and GUBKE FCA 8. The diagram also shows the REIL Rwy 20, MIRL Rwy 12-30, and HIRL Rwy 2-20.

CATEGORY	A	B	C	D
S-30	3480-1	506 (600-1)	3480-1½	506 (600-1½)
CIRCLING	3520-1 543 (600-1)	3580-1 603 (700-1)	3640-1¾ 663 (700-1¾)	3760-2½ 783 (800-2½)

NW-1, 03 DEC 2020 to 31 DEC 2020