

APP CRS
342°

Rwy Idg	N/A
TDZE	N/A
Apt Elev	534

RNAV (GPS)-B
ROSEBURG RGNL (RBG)

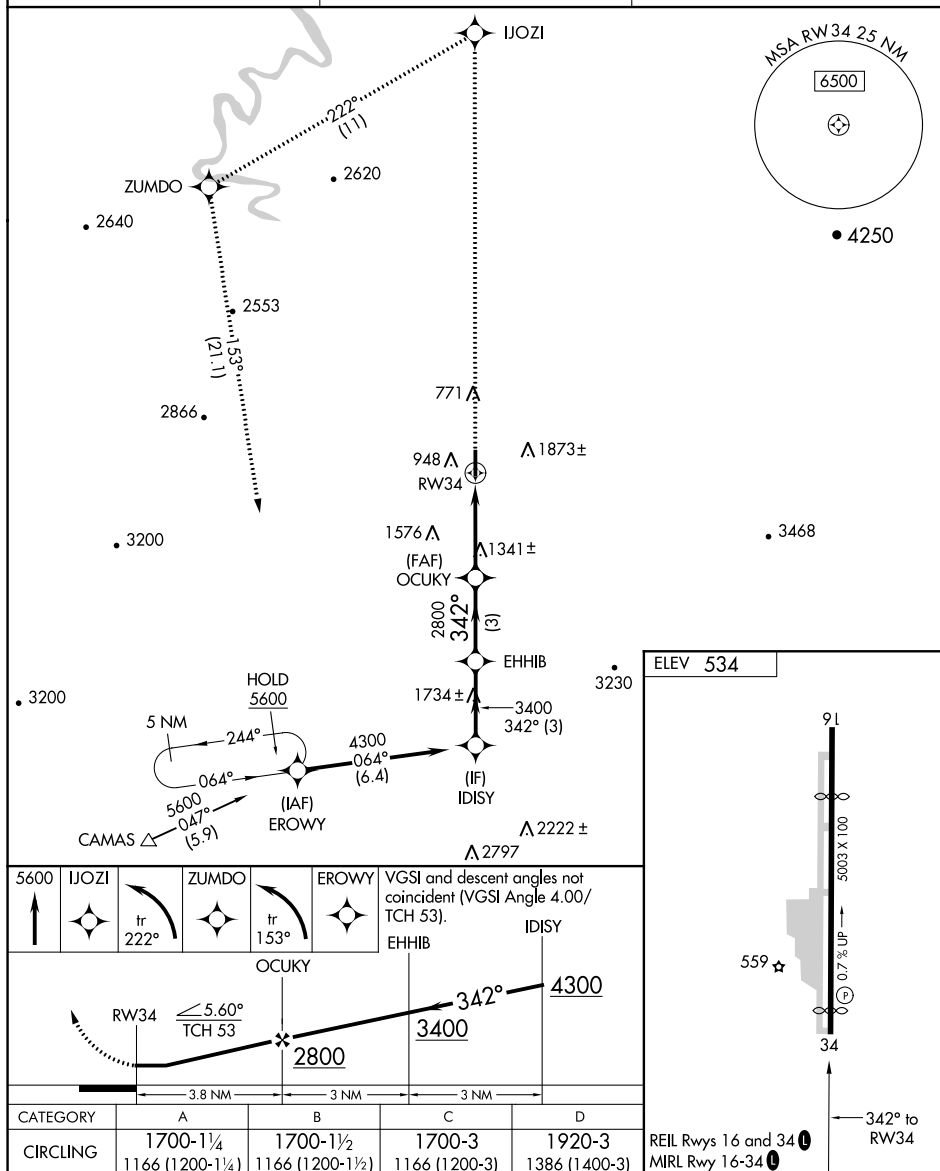
T DME/DME RNP-0.3 NA. Rwy 16, 34 helicopter visibility
A reduction below 1 SM NA. Procedure NA at night.
Circling NA east of Rwy 16-34.

MISSED APPROACH: Climb to 5600 direct IJOZI and left turn on track 222° to ZUMDO and left turn on track 153° to EROWY and hold.

ASOS
135,475

SEATTLE CENTER
127.55 239.0

UNICOM
122.8 (CTAF) **L**



ROSEBURG, OREGON

Orig-A 30MAR17

43°14'N-123°21'W

ROSEBURG RGNL (RBG)
RNAV (GPS)-B

NW-1, 03 DEC 2020 to 31 DEC 2020