

LOC/DME I-HQM	APP CRS	Rwy Idg	5000
108.7	241°	TDZE	16
Chan 24		Apt Elev	18

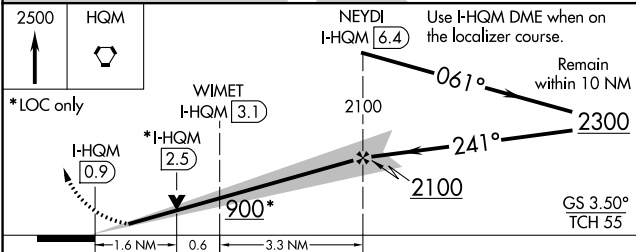
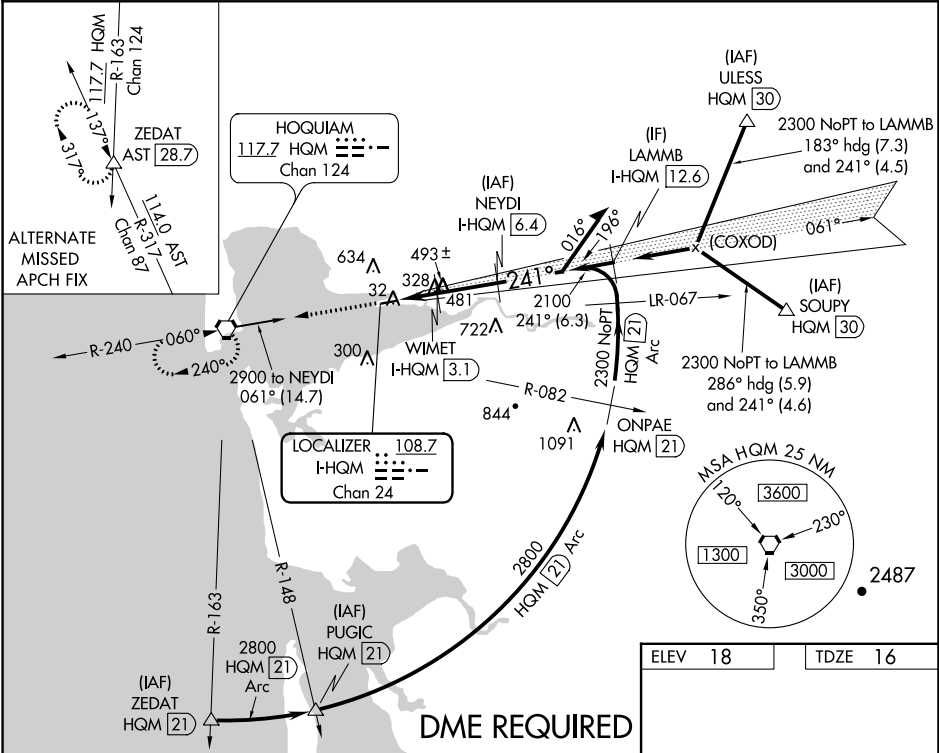
ILS or LOC/DME RWY 24
BOWERMAN (HQM)

⚠ When local altimeter setting not received, procedure NA. For inop MALSR, increase S-ILS Cat C visibility to ¾ mile and S-LOC Cat C visibility to 1 ½ mile. Circling NA northwest of Rwy 6-24.

MALSR

MISSED APPROACH: Climb to 2500 direct HQM VORTAC and hold.

ASOS 135.775	SEATTLE CENTER 128.3 269.0	UNICOM 122.7 (CTAF) 0
------------------------	--------------------------------------	---------------------------------



CATEGORY	A	B	C	D
S-ILS 24	216-½ 200 (200-½)		286-½ 270 (300-½)	NA
S-LOC 24	580-½ 564 (600-½)		580-1¼ 564 (600-1¼)	NA
CIRCLING	580-1 562 (600-1)		580-1½ 562 (600-1½)	NA

ELEV 18 TDZE 16

REIL Rwy 6 0
HIRL Rwy 6-24 0

NW-1, 03 DEC 2020 to 31 DEC 2020

NW-1, 03 DEC 2020 to 31 DEC 2020