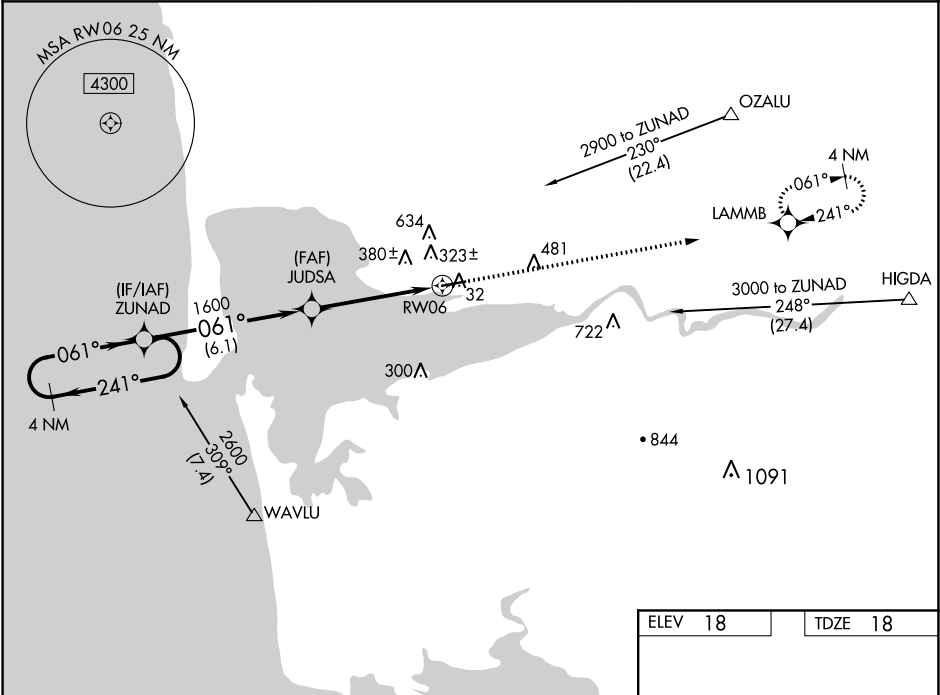


WAAS CH 82015 W06A	APP CRS 061°	Rwy Idg TDZE 18 Apt Elev 18
--	------------------------	---

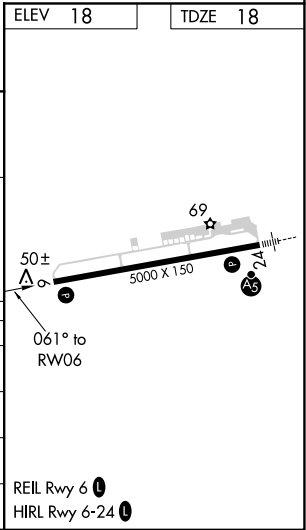
RNAV (GPS) RWY 6
BOWERMAN (HQM)

RNP APCH. Circling NA northwest of Rwy 6-24. For uncompensated Baro-VNAV systems, LNAV/VNAV NA below -15°C (5°F) or above 48°C (118°F). Rwy 6 helicopter visibility reduction below 1 SM NA. When local altimeter setting not received, procedure NA.	MISSED APPROACH: Climb to 2900 direct LAMMB and hold.
--	---

ASOS 135.775	SEATTLE CENTER 128.3 269.0	UNICOM 122.7 (CTAF) 0
------------------------	--------------------------------------	---------------------------------



4 NM Holding Pattern		VGSI and RNAV glidepath not coincident (VGSI Angle 3.00/TCH 40).		2900	LAMMB
2600 ← 241° 061° →		JUDSA 1600 061°		↑	✧
GP 3.00° TCH 52		RW06 1600			
		6.1 NM		4.7 NM	
CATEGORY	A	B	C	D	
LPV DA	308-1		290 (300-1)		
LNAV/VNAV DA	758-2½		740 (800-2½)		
LNAV MDA	620-1	602 (700-1)	620-1¾ 602 (700-1¾)	620-2 602 (700-2)	
CIRCLING	620-1	602 (700-1)	620-1¾ 602 (700-1¾)	640-2 622 (700-2)	



NW-1, 03 DEC 2020 to 31 DEC 2020

NW-1, 03 DEC 2020 to 31 DEC 2020