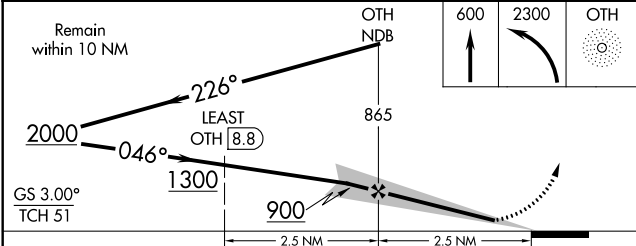
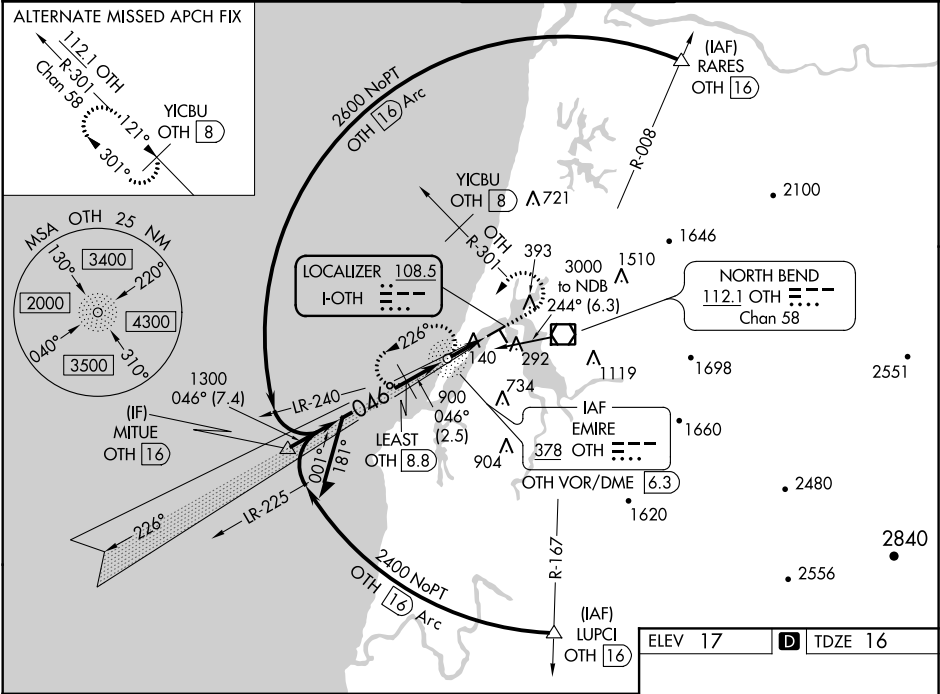


LOC I-OTH	APP CRS	Rwy Idg	5320
108.5	046°	TDZE	16
		Apt Elev	17

ILS or LOC RWY 5
SOUTHWEST OREGON RGNL (OTH)

ADF and DME required.	MALSR	MISSED APPROACH: Climb to 600 then climbing left turn to 2300 direct OTH NDB and hold, continue climb-in-hold to 2300.
<p>⚠ Circling Rwy 13, 31 NA at night. For inop ALS, increase S-ILS 5 all Cats visibility to ¾ mile, S-LOC 5 Cat C/D visibility to 1 ½ mile.</p> <p>*Missed approach requires minimum climb of 248 feet per NM to 800.</p>		

AWOS-3PT 135.075	SEATTLE CENTER 127.55 254.35	NORTH BEND TOWER* 118.45 (CTAF) 0	GND CON 127.1
---------------------	---------------------------------	--------------------------------------	------------------



CATEGORY	A	B	C	D
S-ILS 5*		216-½	200 (200-½)	
S-ILS 5		278-½	262 (300-½)	
S-LOC 5	400-½	384 (400-½)	400-¾	384 (400-¾)
CIRCLING	680-1 663 (700-1)	820-1 803 (900-1)	NA	

ELEV 17	TDZE 16
HIRL Rwy 5-23 0	
MIRL Rwy 13-31 0	
REIL Rws 13, 23 and 31 0	
FAF to MAP 2.5 NM	
Knots	60 90 120 150 180
Min:Sec	2:30 1:40 1:15 1:00 0:50

NW-1, 03 DEC 2020 to 31 DEC 2020

NW-1, 03 DEC 2020 to 31 DEC 2020