
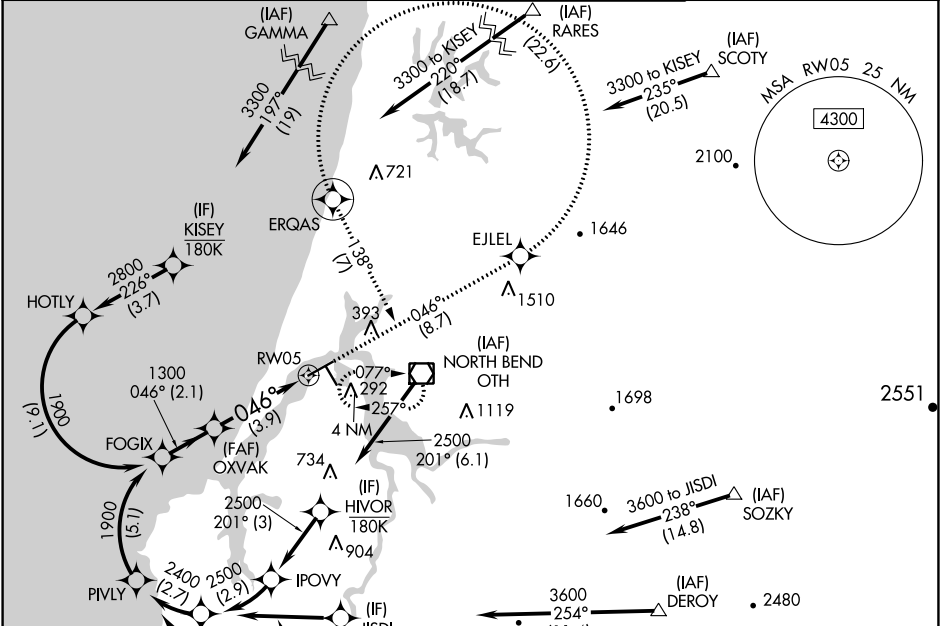


APP CRS	Rwy Idg	5320
046°	TDZE	16
	Apt Elev	17

RNAV (RNP) Z RWY 5
SOUTHWEST OREGON RGNL (OTH)

RNP AR APCH. RF required. ▼ For inop ALS, increase *RNP 0.11 all Cats visibility to 1 SM, #RNP 0.30 all Cats visibility to 1 1/8 SM, and RNP 0.30 all Cats visibility to 1 1/8 SM. For uncompensated Baro-VNAV systems, procedure NA below -2°C or above 54°C.		MALSR 	MISSED APPROACH: Climb to 3300 on track 046° to EJLEL, left turn to ERQAS, and on track 138° to OTH VOR/DME and hold. * Missed approach requires minimum climb of 400 feet per NM to 1200. # Missed approach requires minimum climb of 255 feet per NM to 2400.	
AWOS-3PT 135.075	SEATTLE CENTER 127.55 254.35	NORTH BEND TOWER* 118.45 (CTAF) 0		GND CON 127.1



See planview for multiple IF locations.

FOGIX

1900

GP 3.00°

TCH 51

2.1 NM

3.9 NM

CATEGORY

RNP 0.11 DA*	A	B	C	D
RNP 0.30 DA#	394-5/8	378 (400-5/8)		
RNP 0.30 DA	477-1 1/8	461 (500-1 1/8)		
RNP 0.30 DA	569-1 3/8	553 (600-1 3/8)		

AUTHORIZATION REQUIRED

ELEV 17

TDZE 16

5980 X 150

4420 X 150

TWR

046° to RW05

HIRL Rwy 5-23

MIRL Rwy 13-31

REIL Rwys 13, 23 and 31

NW-1, 03 DEC 2020 to 31 DEC 2020

NW-1, 03 DEC 2020 to 31 DEC 2020