

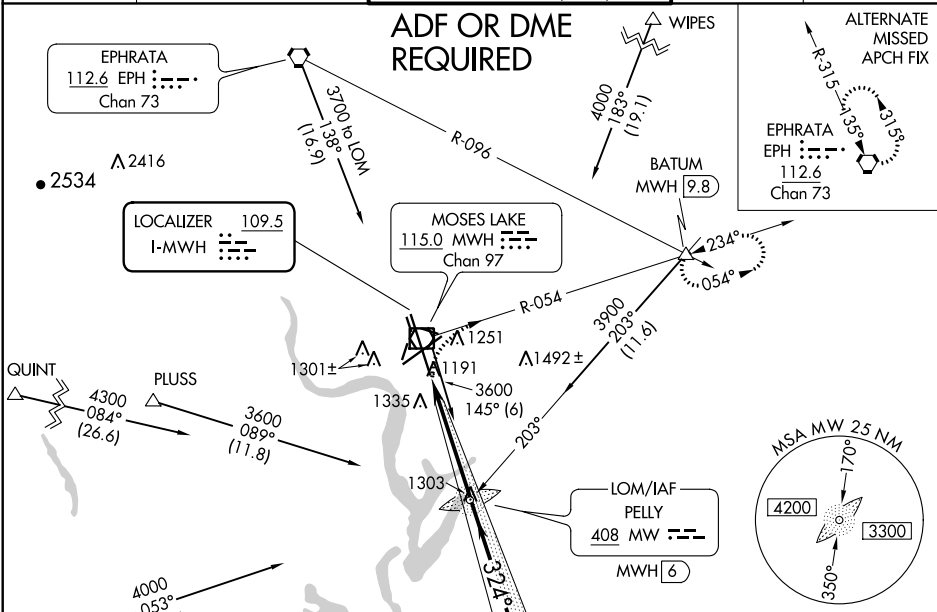
LOC I-MWH	APP CRS	Rwy Idg	13492
109.5	324°	TDZE	1167
		Apt Elev	1189

ILS or LOC RWY 32R
GRANT COUNTY INTL (MWH)

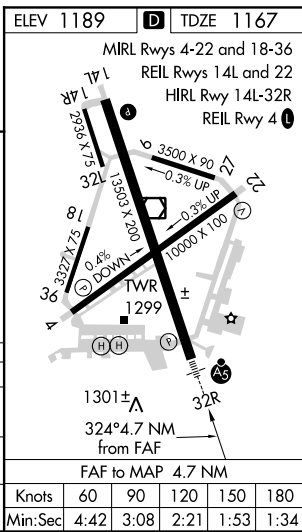
When local altimeter setting not received, use Ephrata altimeter setting and increase all DA/MDA 40 feet. For inoperative MALSR, increase S-LOC 32R Cat D visibility to RVR 5000.
*RVR 1800 authorized with use of FD or AP or HUD to DA, NA when using Ephrata altimeter setting.

MALSR
MISSED APPROACH: Climb to 1800, then climbing right turn to 4000 on MWH R-054 to BATUM INT/MWH 9.8 DME and hold, continue climb-in-hold to 4000.

ATIS	GRANT COUNTY APP CON *	GRANT COUNTY TOWER *	GND CON	UNICOM
119.05	126.4 379.95	118.25 (CTAF) 0 257.8 (EAST) 128.0 257.8 (WEST)	121.9	122.95



1800	4000	BATUM	MW LOM PELLY MWH 6	VGSI and ILS glidepath not coincident (VGSI Angle 3.00/TCH 76).
	MWH R-054			Remain within 10 NM
				3300
				2800
				GS 3.00° TCH 55
				4.7 NM
CATEGORY	A	B	C	D
S-ILS 32R*	1367/24 200 (200-½)			
S-LOC 32R	1440/24 273 (300-½)		1440/40 273 (300-¾)	
CIRCLING	1680-1 491 (500-1)		1680-1½ 491 (500-1½)	
			1740-2 551 (600-2)	



NW-1, 03 DEC 2020 to 31 DEC 2020

NW-1, 03 DEC 2020 to 31 DEC 2020