

WAAS CH 90509 W14A	APP CRS 144°	Rwy Idg 13503 TDZE 1169 Apt Elev 1189
----------------------------------------	------------------------	------------------------------------------------------------------

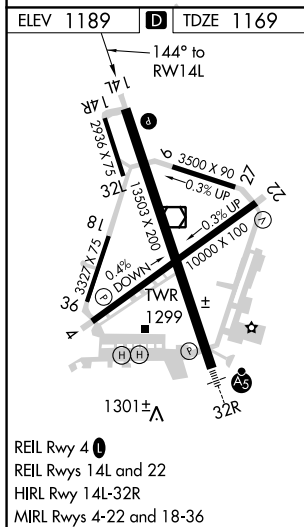
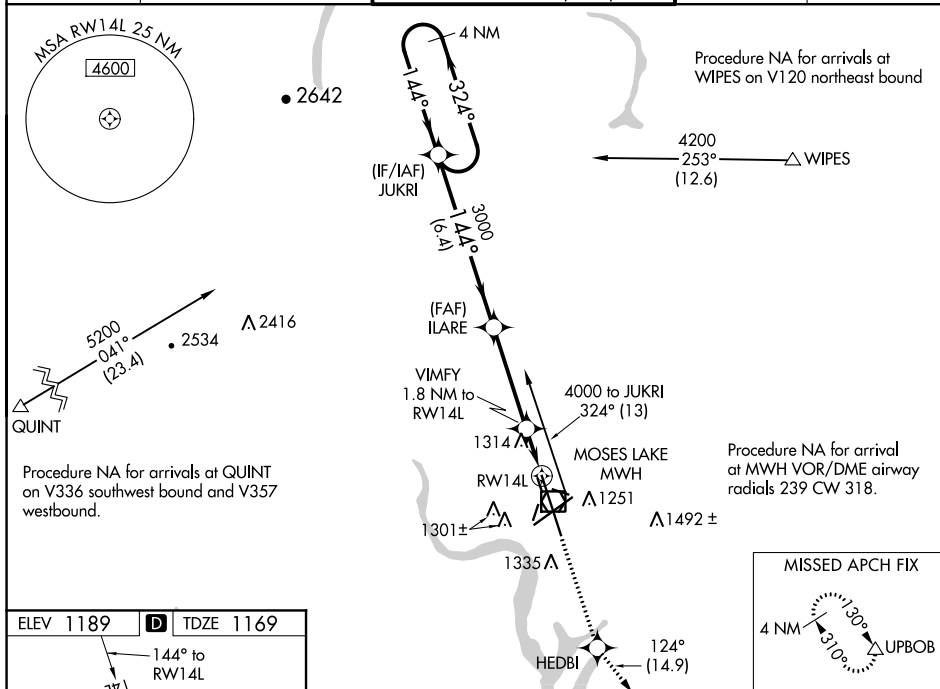
RNAV (GPS) Y RWY 14L
GRANT COUNTY INTL (MWH)

GRANT COUNTY INTL (MWH)

V For uncompensated Baro-VNAV systems, LNAV/VNAV NA below -17°C (2°F) or **A** above 36°C (96°F). DME/DME RNP-0.3 NA. Baro-VNAV and VDP NA when using Ephrata altimeter setting. When local altimeter setting not received, use Ephrata altimeter setting and increase all DA 36 feet and all MDA 40 feet, increase LNAV/VNAV visibility all Cats 1/8 mile and LNAV Cats C and D visibility 1/4 mile.

MISSED APPROACH: Climb to 4000 direct HEDBI and on track 124° to UPBOB and hold.

ATIS 119.05	GRANT COUNTY APP CON ★ 126.4 379.95	GRANT COUNTY TOWER ★ 118.25 (CTAF) 0 257.8 (EAST) 128.0 257.8 (WEST)	GND CON 121.9	UNICOM 122.95
-----------------------	-----------------------------------------------	------------------------------------------------------------------------------------------	-------------------------	-------------------------



VGS1 and RNAV glidepath not coincident (VGS1 Angle 3.00/TCH 75).

4 NM Holding Pattern

JUKRI

ILARE

4000

324°

144°

3000

144°

3000

GP 3.00° TCH 52

6.4 NM

3.8 NM

0.7

1.1 NM

RW14L

VIMFY

1.8 NM to RW14L

*1.1 NM to RW14L

*1780

HEDBI

UPBOB

tr 124°

*INAV only.

CATEGORY	A	B	C	D
LPV DA		1369- $\frac{3}{4}$	200 (200- $\frac{3}{4}$)	
INAV/ VNAV DA		1436- $\frac{7}{8}$	267 (300- $\frac{7}{8}$)	
INAV MDA	1580-1	411 (400-1)	1580-1 $\frac{1}{8}$	411 (400-1 $\frac{1}{8}$)
CIRCLING	1660-1	471 (500-1)	1660-1 $\frac{1}{2}$ 471 (500-1 $\frac{1}{2}$)	1740-2 551 (600-2)

RNAV (GPS) Y RWY 14L