

WAAS CH 70410 W22A	APP CRS 216°	Rwy Idg 10000 TDZE 1166 Apt Elev 1189
--	------------------------	--

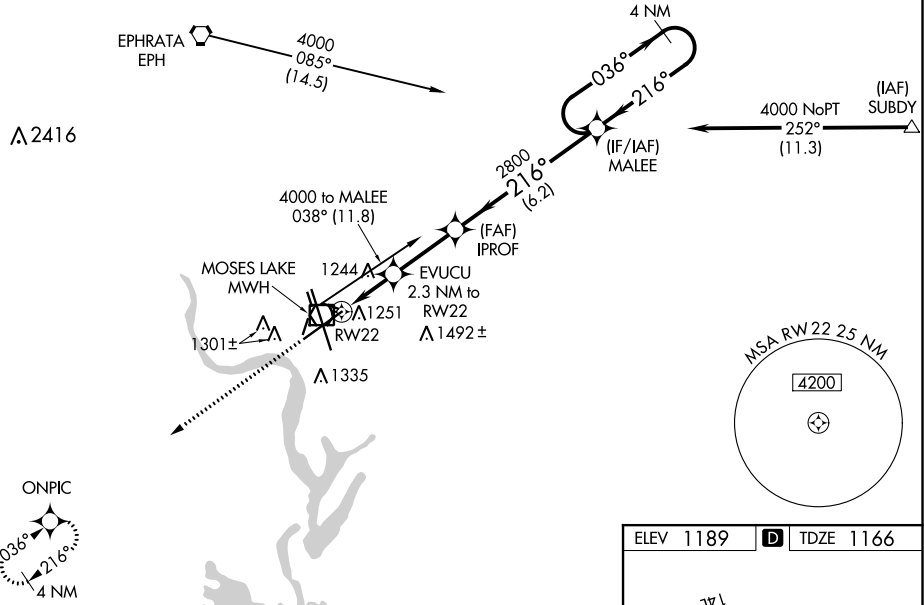
RNAV (GPS) Y RWY 22
GRANT COUNTY INTL (MWH)

⚠ For uncompensated Baro-VNAV systems, LNAV/VNAV NA below -17°C (2°F) or above 36°C (96°F). DME/DME RNP-0.3 NA. Baro-VNAV and VDP NA when using Ephrata altimeter setting. When local altimeter setting not received, use Ephrata altimeter setting and increase all DA 36 feet and all MDA 40 feet, increase LNAV/VNAV all Cats visibility and LNAV Cats C and D visibility 1/8 mile.

MISSED APPROACH: Climb to 4000 direct ONPIC and hold.

ATIS 119.05	GRANT COUNTY APP CON ★ 126.4 379.95	GRANT COUNTY TOWER ★ 118.25 (CTAF) 0 257.8 (EAST) 128.0 257.8 (WEST)	GND CON 121.9	UNICOM 122.95
-----------------------	---	--	-------------------------	-------------------------

Procedure NA for arrivals at EPH VORTAC on airway radials 060 CW 135.



4000	ONPIC	EVUCU 2.3 NM to RWY22	I PROF 2800	MALEE	4 NM Holding Pattern
*LNAV only		*0.9 NM to RWY22			
		0.9	1.4 NM	2.7 NM	6.2 NM
CATEGORY	A	B	C	D	
LPV DA		1366-3/4	200 (200-3/4)		
LNAV/VNAV DA		1429-7/8	263 (300-7/8)		
LNAV MDA		1500-1	334 (400-1)		
CIRCLING	1660-1	471 (500-1)	1660-1 1/2 471 (500-1 1/2)	1740-2 551 (600-2)	

ELEV 1189 **D** TDZE 1166

The detailed approach diagram shows the runway layout for RWY 22, including the 1301± MSL elevation, the 32R and 32L runways, and the 1299 MSL elevation. It also shows the 1300 X 100 and 3500 X 90 dimensions, and the 0.3% UP and 0.3% DOWN slopes. The diagram includes the 1301± MSL elevation and the 1299 MSL elevation.

REIL Rwy 4
REIL Rwy 14L and 22
HIRL Rwy 14L-32R
MIRL Rwy 4-22 and 18-36

NW-1, 03 DEC 2020 to 31 DEC 2020

NW-1, 03 DEC 2020 to 31 DEC 2020