

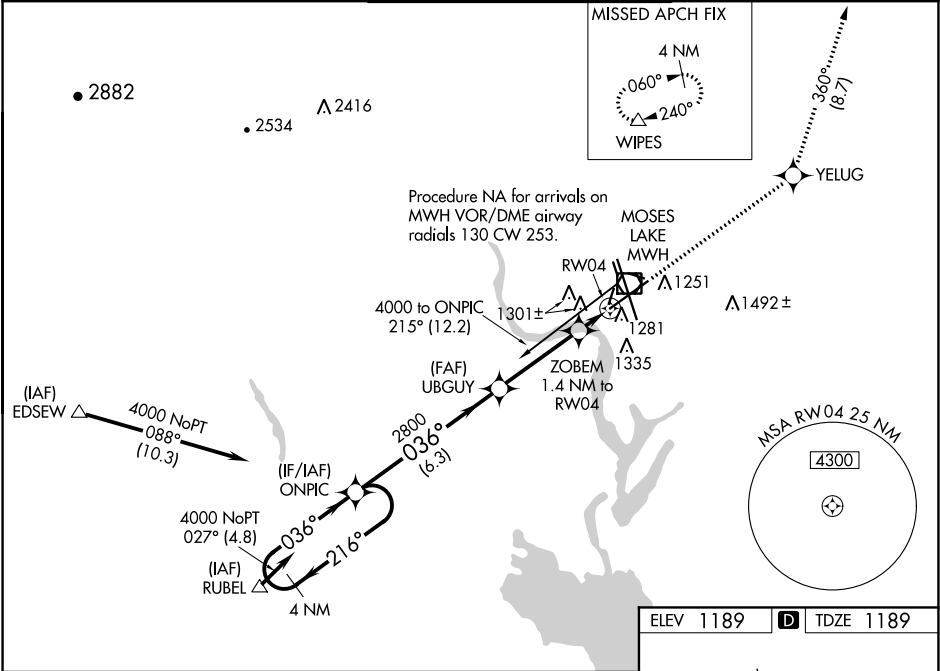
WAAS CH 42809 W04A	APP CRS 036°	Rwy ldg 10000 TDZE 1189 Apt Elev 1189
--	------------------------	--

RNAV (GPS) Y RWY 4
GRANT COUNTY INTL (MWH)

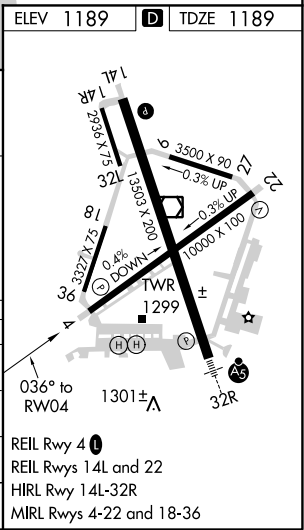
⚠ For uncompensated Baro-VNAV systems, LNAV/VNAV NA below -17°C (2°F) or above 36°C (96°F). DME/DME RNP-0.3 NA. When local altimeter setting not received, use Ephrata altimeter setting and increase all DA 36 feet and increase all MDA 40 feet, increase LNAV/VNAV all Cats visibility, and LNAV Cat C and D visibility 1/8 mile. Baro-VNAV NA when using Ephrata altimeter setting.

MISSED APPROACH: Climb to 4000 direct YELUG and on track 360° to WIPES and hold.

ATIS 119.05	GRANT COUNTY APP CON ★ 126.4 379.95	GRANT COUNTY TOWER ★ 118.25 (CTAF) 0 257.8 (EAST) 128.0 257.8 (WEST)	GND CON 121.9	UNICOM 122.95
-----------------------	---	--	-------------------------	-------------------------



4000 Holding Pattern		ONPIC		UBGYU		ZOBEM 1.4 NM to RW04		RW04	
← 216°		036° →		2800		2800		*1680	
GP 3.00°		TCH 50		6.3 NM		3.5 NM		1.4 NM	
CATEGORY		A		B		C		D	
LPV DA		1389-3/4 200 (200-3/4)							
LNAV/VNAV DA		1442-3/4 253 (300-3/4)							
LNAV MDA		1540-1 351 (400-1)							
CIRCLING		1660-1 471 (500-1)		1660-1 1/2 471 (500-1 1/2)		1740-2 551 (600-2)			



NW-1, 03 DEC 2020 to 31 DEC 2020

NW-1, 03 DEC 2020 to 31 DEC 2020