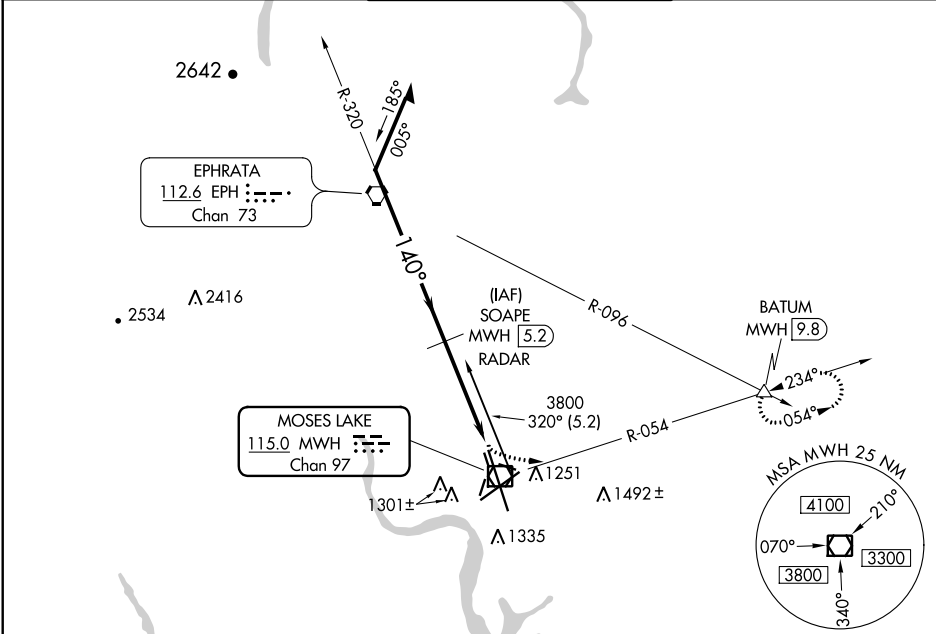


VOR/DME MWH	APP CRS	Rwy Idg	13503
115.0	140°	TDZE	1166
Chan 97		Apt Elev	1185

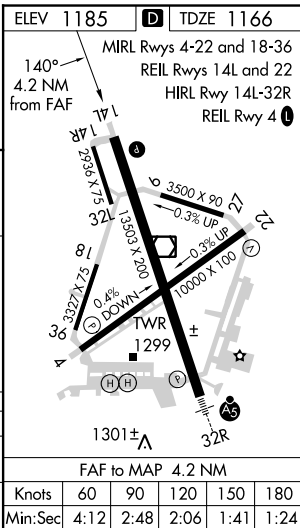
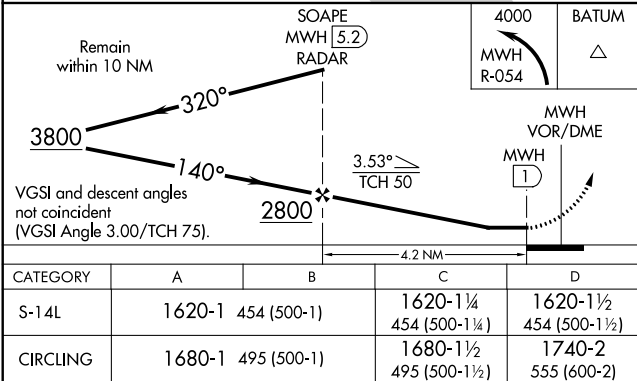
VOR-3 RWY 14L  
GRANT COUNTY INTL (MWH)

		MISSED APPROACH: Climbing left turn to 4000 via MWH R-054 to BATUM INT/MWH 9.8 DME and hold.	
--	--	--	--

ATIS 119.05	GRANT COUNTY APP CON ★ 126.4 379.95	GRANT COUNTY TOWER ★ 118.25 (CTAF) 257.8 (EAST) 128.0 257.8 (WEST)	GND CON 121.9	UNICOM 122.95
----------------	--	--	------------------	------------------



RADAR or DME REQUIRED



NW-1, 03 DEC 2020 to 31 DEC 2020

NW-1, 03 DEC 2020 to 31 DEC 2020