

| | | |
|--|------------------------|---|
| WAAS CH 69502 W13A | APP CRS 127° | Rwy Idg 6600 TDZE 203 Apt Elev 208 |
|--|------------------------|---|

RNAV (GPS) RWY 13R
PORTLAND-HILLSBORO (HIO)

RNP APCH.

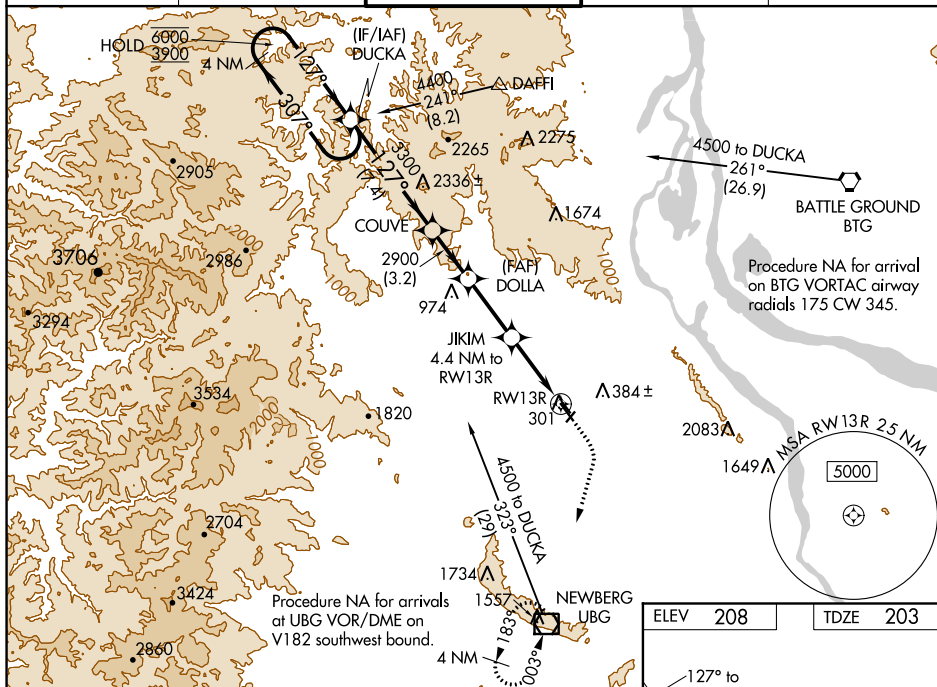
T Circling to Rwy 13L-31R NA at night. For uncompensated Baro-VNAV systems, LNAV/VNAV NA below -18°C or above 54°C. For inop ALS, increase LNAV Cat A/B visibility to RVR 5500 and Cat C/D to 1 3/8 SM.
A #RVR 1800 authorized with use of FD or AP or HUD to DA.

MALSR

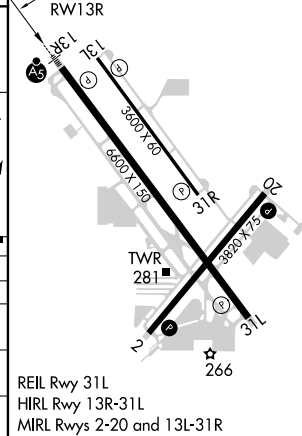


MISSED APPROACH: Climb to 1000 then climbing right turn to 3000 direct UBG VOR/DME and hold. Continue climb-in-hold to 3000.

| | | | | |
|----------------|-----------------------------------|---|------------------|------------------|
| ATIS 127.65 | PORTLAND APP CON 126.0 269.175 | HILLSBORO TOWER ★ 119.3 (CTAF) 0 239.3 | GND CON 121.7 | UNICOM 122.95 |
|----------------|-----------------------------------|---|------------------|------------------|



| CATEGORY | A | B | C | D |
|-------------------|----------------------|----------------------|------------------------|------------------------|
| LPV DA# | | 403/24 | 200 (200-½) | |
| LNAV/VNAV DA | | 661/45 | 458 (500-%) | |
| LNAV MDA | 660/40 | 457 (500-¾) | 660/50 | 457 (500-1) |
| C CIRCLING | 680-1 472 (500-1) | 720-1 512 (600-1) | 720-1½ 512 (600-1½) | 980-2½ 772 (800-2½) |



RNAV (GPS) RWY 13R