

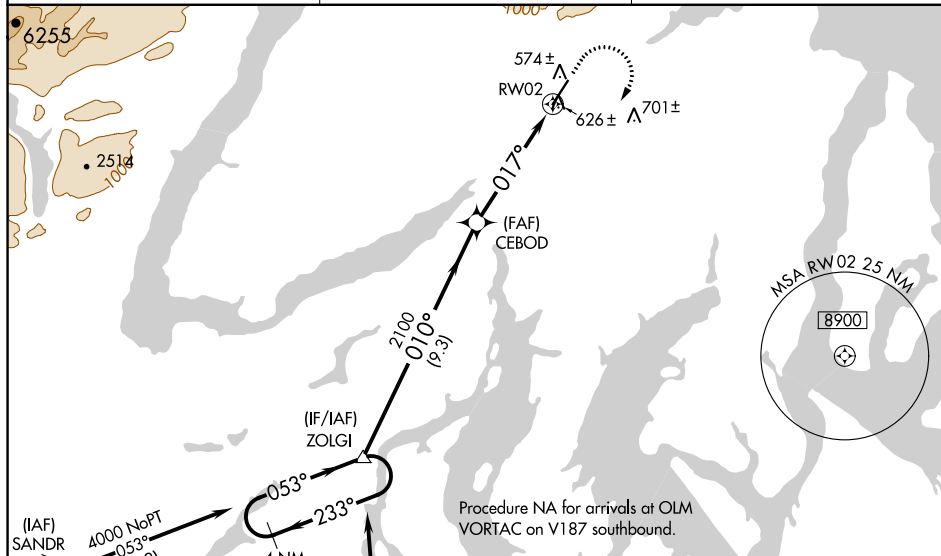
WAAS CH <b>49232</b> <b>W02A</b>	APP CRS <b>017°</b>	Rwy Idg <b>6000</b> TDZE <b>444</b> Apt Elev <b>444</b>
--	------------------------	---

RNAV (GPS) RWY 2  
BREMERTON NATIONAL (PWT)

**V** Circling NA for Cats C and D west of Rwy 2-20. DME/DME RNP-0.3 NA. **A** VDP and Baro-VNAV NA when using Seattle-Tacoma Intl altimeter setting. When local altimeter setting not received, use Seattle-Tacoma Intl altimeter setting and increase LPV DA to 817 and all visibilities  $\frac{1}{4}$  SM; increase all LNAV/VNAV DA to 958 and all visibilities  $\frac{1}{4}$  SM; increase all MDA 60 feet and LNAV/Circling Cats B, C and D  $\frac{1}{2}$  SM. Rwy 2 helicopter visibility reduction below  $\frac{3}{4}$  SM NA.

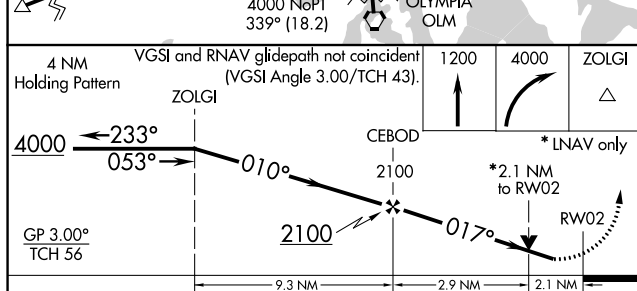
**MISSED APPROACH:** Climb to 1 200 then climbing right turn to 4000 direct ZOLGI and hold, continue climb-in-hold to 4000.


AWOS-3PT <b>121.2</b>	SEATTLE APP CON <b>127.1 254.4 269.125</b>	UNICOM <b>123.05(CTAF)0</b>
--------------------------	---	--------------------------------



Procedure NA for arrivals at OLM  
VORTAC on V187 southbound.

ELEV	444	TDZE	444
------	-----	------	-----



CATEGORY	A	B	C	D
LPV DA	772-1 328 (400-1)			
LNAV/VNAV DA	913-1½ 469 (500-1½)			
LNAV MDA	1160-1 716 (800-1)		1160-2 716 (800-2)	
 CIRCLING	1160-1 716 (800-1)		1160-2 716 (800-2)	1240-2½ 796 (800-2½)

