

WAAS CH 93600 W22A	APP CRS 221°	Rwy Idg TDZE 5076 Apt Elev 5102
--	------------------------	---

RNAV (GPS) RWY 22
YELLOWSTONE RGNL (COD)

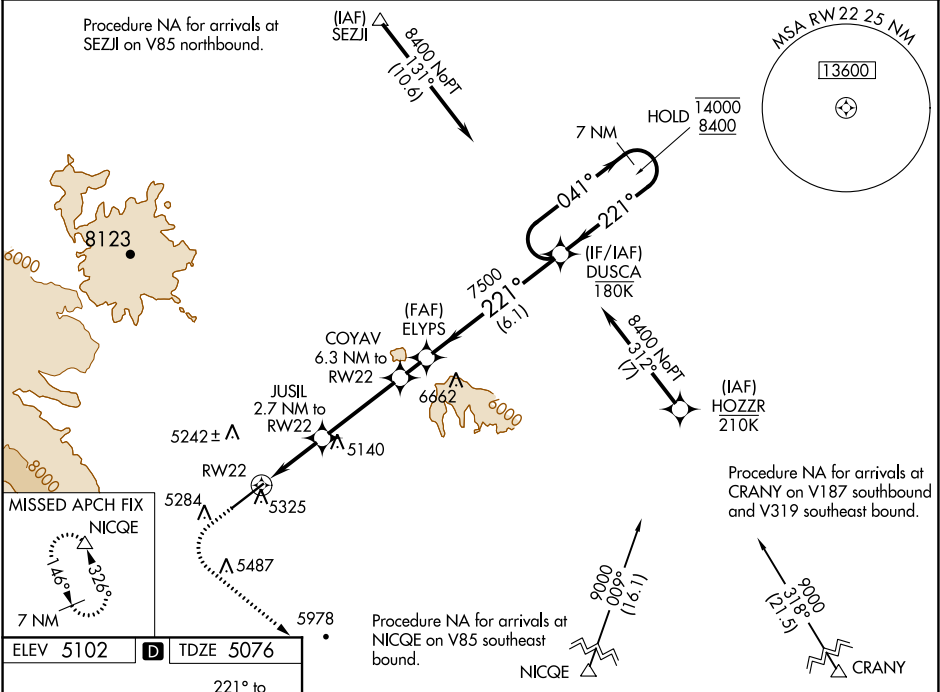
RNP APCH

⚠

❄ -31°C

MISSED APPROACH: (Do not exceed 185K until NICQE) Climb to 5740 then climbing left turn to 9600 direct NICQE and hold, continue climb-in-hold to 9600. # Missed approach requires minimum climb of 227 feet per NM to 6900.

AWOS-3PT 135.075	SALT LAKE CENTER 127.75 351.9	UNICOM 122.8 (CTAF) 0
----------------------------	---	---------------------------------



ELEV 5102	D	TDZE 5076
5740	9600	NICQE
* LNAV only	JUSIL 2.7 NM to RW22	COYAV 6.3 NM to RW22
* 1.5 NM to RW22	ELYPs	DUSCA
7120*	7500	7500
6000*	7500	7500
1.5	1.2	3.5 NM
1.2	1.2 NM	6.1 NM
CATEGORY	A	B
LPV DA #	5397-1	321 (300-1)
LPV DA	5457-1½	381 (400-1½)
LNAV MDA	5600-1	524 (500-1)
CIRCLING	5780-1	5920-1¼
	678 (700-1)	818 (900-1¼)
	5940-2½	6940-3
	838 (900-2½)	1838 (1900-3)