




CODY, WYOMING

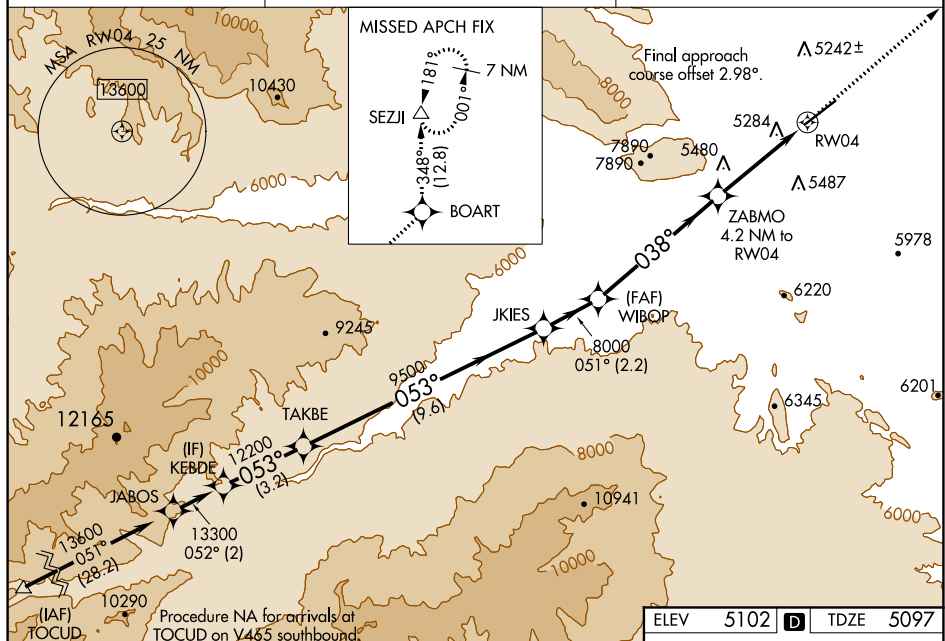
AL-5243 (FAA)

20086

WAAS CH 56244 W04A	APP CRS 038°	Rwy Idg TDZE Apt Elev	7178 5097 5102
--	------------------------	-----------------------------	---

RNAV (GPS) RWY 4
YELLOWSTONE RGNL (COD)

RNP APCH.		MISSED APPROACH: Climb to 8400 direct BOART and on track 348° to SEZJI and hold.
 Rwy 4 helicopter visibility reduction below ¾ SM NA.  Baro-VNAV NA.  -31°C		
AWOS-3PT 135.075	SALT LAKE CENTER 127.75 351.9	UNICOM 122.8 (CTAF) 0

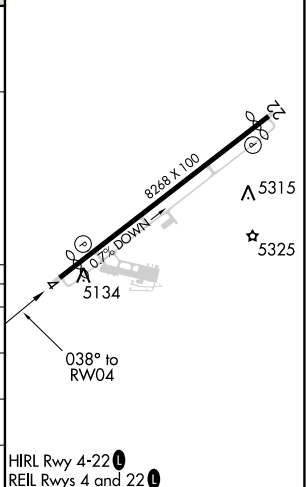


KEBDE 13300
TAKBE 12200
JKIES 9500
WIBOP 8000
ZABMO 4.2 NM to RW04
RW04

GP 3.50° TCH 60

* NAV only.

CATEGORY	A	B	C	D
LPV DA	5794-2 697 (700-2)			
RNAV/VNAV DA	5862-2½ 765 (800-2½)			
RNAV MDA	5980-1¼ 883 (900-1¼)	5980-2½ 883 (900-2½)		
C CIRCLING	5980-1¼ 878 (900-1¼)	5980-2½ 878 (900-2½)		6940-3 1838 (1900-3)



CODY, WYOMING
Orig 26MAR20

44°31'N-109°01'W

YELLOWSTONE RGNL (COD)
RNAV (GPS) RWY 4

NW-1, 03 DEC 2020 to 31 DEC 2020