




WAAS CH 78026 W23A	APP CRS 230°	Rwy Idg 5005 TDZE 3443 Apt Elev 3443
----------------------------------------	------------------------	-----------------------------------------------------------------

APP CRS
230°

Rwy Idg	5005
TDZE	3443
Apt Elev	3443

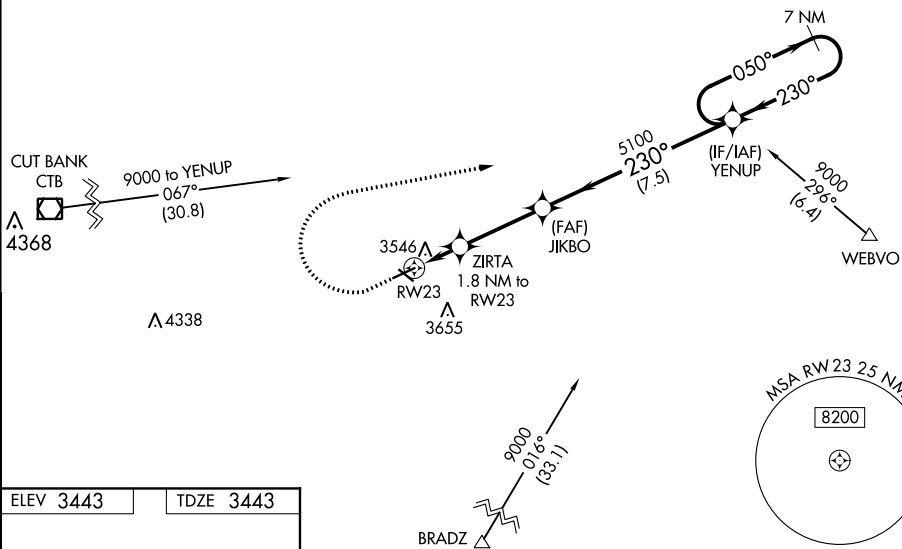
RNAV (GPS) RWY 23
SHELBY (SBX)

	Baro-VNAV NA. Rwy 23 helicopter visibility reduction below 1 SM NA.
 NA	DME/DME RNP-0.3 NA. Use Cut Back altimeter setting, if not received use Great Falls altimeter setting and increase all DA 81 feet and all MDA 100 feet; increase LPV all Cats visibility $\frac{3}{8}$ mile, LNAV/VNAV all Cats, LNAV Cats C/D, Circling Cats C/D visibilities $\frac{1}{4}$ mile.
 -31°C	Straight-in Rwy 23 NA at night. Circling Rwy 23 NA at night.

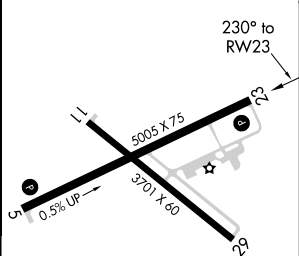
MISSED APPROACH: Climb to 4300 then climbing right turn to 9000 direct YENUP and hold, continue climb-in-hold to 9000.

CTB ASOS
119.025

SALT LAKE CITY CENTER
133.4 285.4

UNICOM
122.8 (CTAF) **L**

ELEV 3443		TDZE 3443
-----------	--	-----------



VGS1 and RNAV glidepath not coincident.
(VGS1 Angle 3.00°/TCH 45°).

YENUP

7 NM Holding Pattern

050°

230°

5100

5100

4060*

1.8 NM

3.3 NM

7.5 NM

GP 3.00°
TCH 45°

CATEGORY	A	B	C	D
LPV DA	3799-1 $\frac{3}{8}$	356 (400-1 $\frac{1}{8}$)		
RNAV/DA	3813-1 $\frac{1}{4}$	370 (400-1 $\frac{1}{4}$)		
RNAV MDA	3920-1	477 (500-1)	3920-1 $\frac{3}{8}$	477 (500-1 $\frac{3}{8}$)
CIRCLING	4020-1 577 (600-1)	4080-1 637 (700-1)	4100-1 $\frac{3}{4}$ 657 (700-1 $\frac{3}{4}$)	4220-2 $\frac{1}{2}$ 777 (800-2 $\frac{1}{2}$)

MIRL Rwy 5-23 and 11-29 **L**

SHELBY, MONTANA
Amdt 2B 02MAR17

48°32'N-111°52'W

SHELBY (SBX)
RNAV (GPS) RWY 23