

WAAS CH 69630 W05A	APP CRS 050°	Rwy Idg TDZE 3427 Apt Elev 3443
--	------------------------	---

RNAV (GPS) RWY 5
SHELBY (SBX)

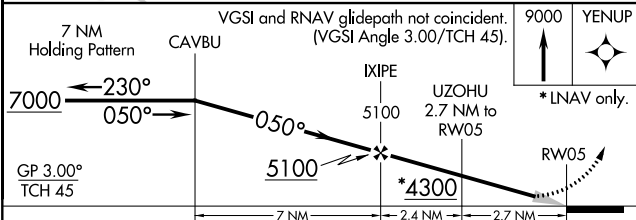
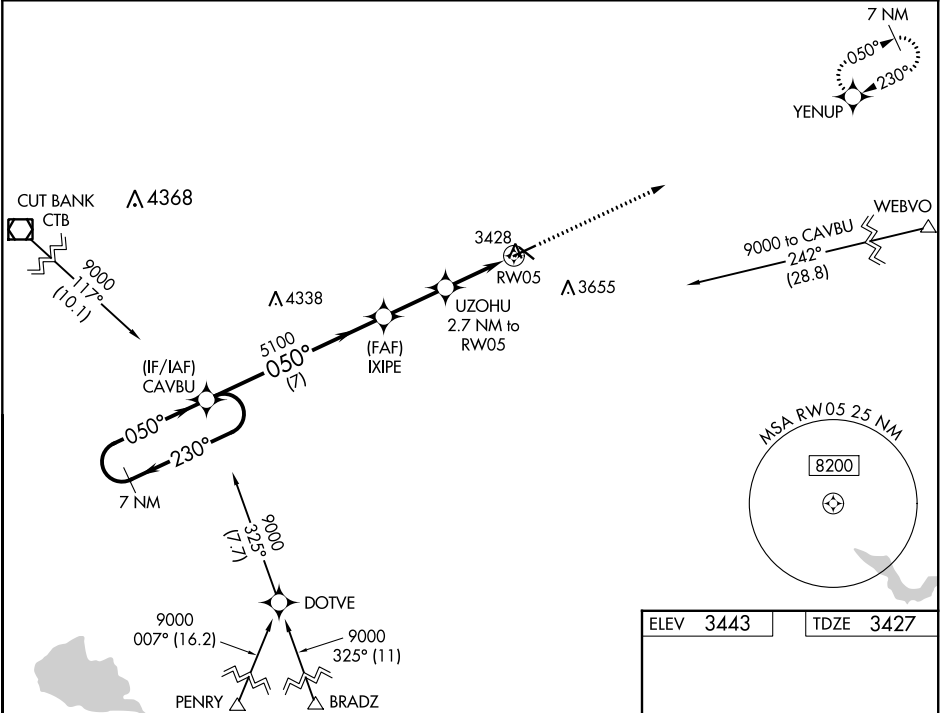
▼ Night landing: Rwy 23 NA. Baro-VNAV NA. DME/DME RNP-0.3 NA. Use Cut Bank altimeter setting, if not received use Great Falls altimeter setting and increase all DA 81 feet and all MDA 100 feet; increase LPV all Cats visibility ¼ mile, LNAV/VNAV all Cats visibility ½ mile, LNAV Cats C/D and Circling Cat C/D visibilities ¼ mile.

▲ NA

❄ -31°C

MISSED APPROACH: Climb to 9000 direct YENUP and hold, continue climb-in-hold to 9000.

CTB ASOS 119.025	SALT LAKE CITY CENTER 133.4 285.4	UNICOM 122.8 (CTAF) 0
----------------------------	---	---------------------------------



ELEV **3443** TDZE **3427**

RNAV (GPS) RWY 5

MIRL Rwy 5-23 and 11-29 0

The diagram shows runway 5 with dimensions 5005 x 75 feet and 3701 x 60 feet. The approach path is shown at 050° to RW05, 0.5% UP.

CATEGORY	A	B	C	D
LPV DA		3733-1	306 (300-1)	
LNAV/DA		3783-1 1/8	356 (400-1 1/8)	
LNAV MDA	3800-1	373 (400-1)	3800-1 1/8	373 (400-1 1/8)
CIRCLING	4020-1 577 (600-1)	4080-1 637 (700-1)	4100-1 3/4 657 (700-1 3/4)	4220-2 1/2 777 (800-2 1/2)

NW-1, 03 DEC 2020 to 31 DEC 2020

NW-1, 03 DEC 2020 to 31 DEC 2020